

# **PHILIPPINE BIDDING DOCUMENTS**

## **CY 2022 BASIC EDUCATION FACILITIES FUND (BEFF) REPAIR AND REHABILITATION OF CLASSROOMS SCHOOL BUILDINGS**

Government of the Republic of the Philippines



**Sixth Edition  
July 2020**

# Preface

These Philippine Bidding Documents (PBDs) for the procurement of Infrastructure Projects (hereinafter referred to also as the “Works”) through Competitive Bidding have been prepared by the Government of the Philippines for use by all branches, agencies, departments, bureaus, offices, or instrumentalities of the government, including government-owned and/or -controlled corporations, government financial institutions, state universities and colleges, local government units, and autonomous regional government. The procedures and practices presented in this document have been developed through broad experience, and are for mandatory use in projects that are financed in whole or in part by the Government of the Philippines or any foreign government/foreign or international financing institution in accordance with the provisions of the 2016 revised Implementing Rules and Regulations (IRR) of Republic Act (RA) No. 9184.

The PBDs are intended as a model for admeasurements (unit prices or unit rates in a bill of quantities) types of contract, which are the most common in Works contracting.

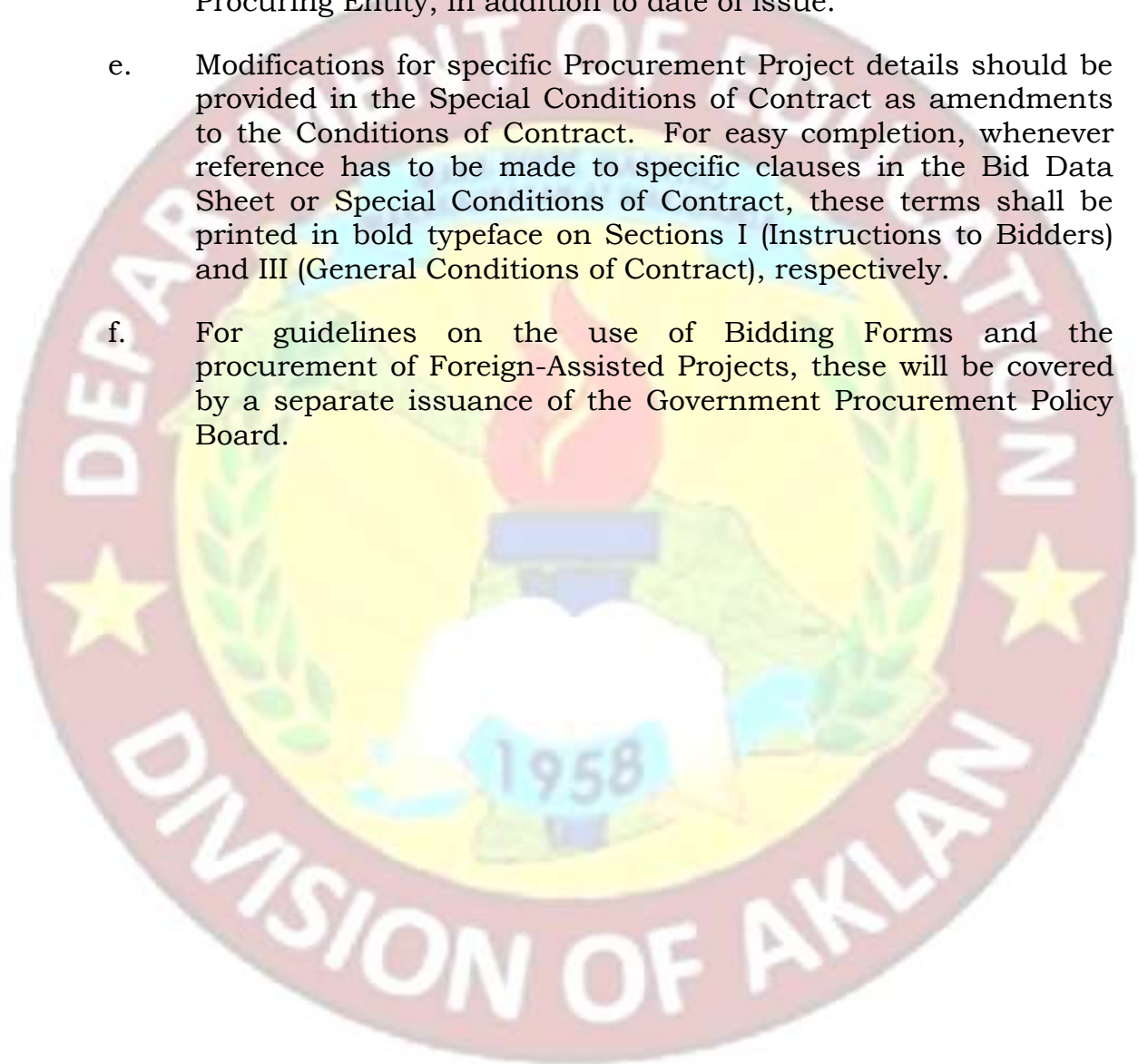
The Bidding Documents shall clearly and adequately define, among others: (i) the objectives, scope, and expected outputs and/or results of the proposed contract; (ii) the eligibility requirements of Bidders; (iii) the expected contract duration; and (iv) the obligations, duties, and/or functions of the winning Bidder.

Care should be taken to check the relevance of the provisions of the PBDs against the requirements of the specific Works to be procured. If duplication of a subject is inevitable in other sections of the document prepared by the Procuring Entity, care must be exercised to avoid contradictions between clauses dealing with the same matter.

Moreover, each section is prepared with notes intended only as information for the Procuring Entity or the person drafting the Bidding Documents. They shall not be included in the final documents. The following general directions should be observed when using the documents:

- a. All the documents listed in the Table of Contents are normally required for the procurement of Infrastructure Projects. However, they should be adapted as necessary to the circumstances of the particular Project.
- b. Specific details, such as the “*name of the Procuring Entity*” and “*address for bid submission*,” should be furnished in the Instructions to Bidders, Bid Data Sheet, and Special Conditions of Contract. The final documents should contain neither blank spaces nor options.

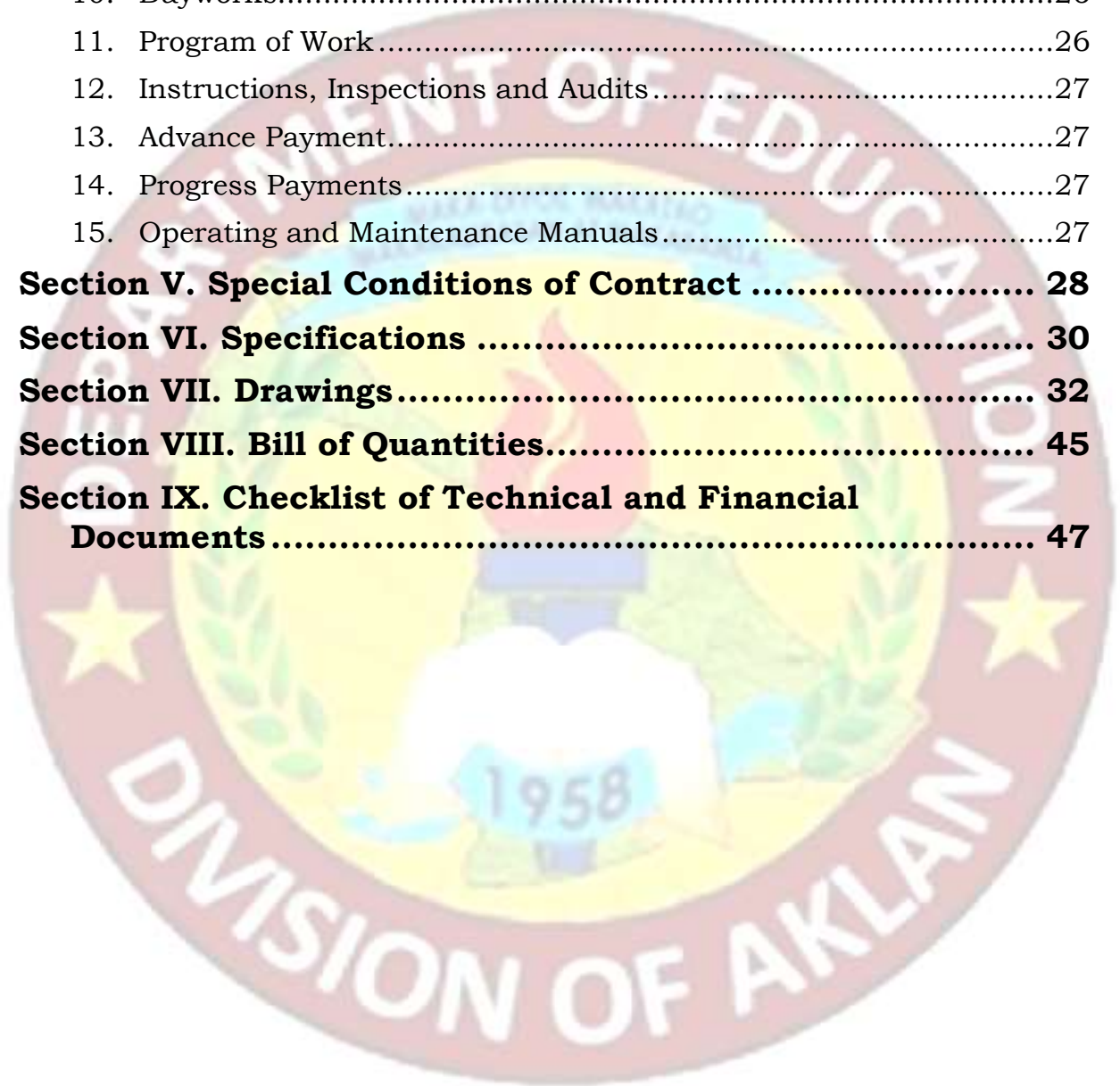
- c. This Preface and the footnotes or notes in italics included in the Invitation to Bid, BDS, General Conditions of Contract, Special Conditions of Contract, Specifications, Drawings, and Bill of Quantities are not part of the text of the final document, although they contain instructions that the Procuring Entity should strictly follow.
- d. The cover should be modified as required to identify the Bidding Documents as to the names of the Project, Contract, and Procuring Entity, in addition to date of issue.
- e. Modifications for specific Procurement Project details should be provided in the Special Conditions of Contract as amendments to the Conditions of Contract. For easy completion, whenever reference has to be made to specific clauses in the Bid Data Sheet or Special Conditions of Contract, these terms shall be printed in bold typeface on Sections I (Instructions to Bidders) and III (General Conditions of Contract), respectively.
- f. For guidelines on the use of Bidding Forms and the procurement of Foreign-Assisted Projects, these will be covered by a separate issuance of the Government Procurement Policy Board.



# TABLE OF CONTENTS

<b>Glossary of Terms, Abbreviations, and Acronyms.....</b>	<b>5</b>
<b>Section I. Invitation to Bid.....</b>	<b>8</b>
<b>Section II. Instructions to Bidders.....</b>	<b>12</b>
1. Scope of Bid.....	13
2. Funding Information.....	13
3. Bidding Requirements.....	13
4. Corrupt, Fraudulent, Collusive, Coercive, and Obstructive Practices.....	14
5. Eligible Bidders.....	14
6. Origin of Associated Goods.....	14
7. Subcontracts.....	14
8. Pre-Bid Conference.....	15
9. Clarification and Amendment of Bidding Documents.....	15
10. Documents Comprising the Bid: Eligibility and Technical Components.....	15
11. Documents Comprising the Bid: Financial Component.....	16
12. Alternative Bids.....	16
13. Bid Prices.....	16
14. Bid and Payment Currencies.....	16
15. Bid Security.....	17
16. Sealing and Marking of Bids.....	17
17. Deadline for Submission of Bids.....	17
18. Opening and Preliminary Examination of Bids.....	17
19. Detailed Evaluation and Comparison of Bids.....	18
20. Post Qualification.....	18
21. Signing of the Contract.....	18
<b>Section III. Bid Data Sheet.....</b>	<b>19</b>
<b>Section IV. General Conditions of Contract.....</b>	<b>23</b>
1. Scope of Contract.....	24
2. Sectional Completion of Works.....	24
3. Possession of Site.....	24
4. The Contractor's Obligations.....	25

5. Performance Security.....	25
6. Site Investigation Reports.....	25
7. Warranty .....	25
8. Liability of the Contractor .....	26
9. Termination for Other Causes .....	26
10. Dayworks.....	26
11. Program of Work.....	26
12. Instructions, Inspections and Audits .....	27
13. Advance Payment.....	27
14. Progress Payments.....	27
15. Operating and Maintenance Manuals.....	27
<b>Section V. Special Conditions of Contract .....</b>	<b>28</b>
<b>Section VI. Specifications .....</b>	<b>30</b>
<b>Section VII. Drawings .....</b>	<b>32</b>
<b>Section VIII. Bill of Quantities.....</b>	<b>45</b>
<b>Section IX. Checklist of Technical and Financial Documents .....</b>	<b>47</b>



# **Glossary of Terms, Abbreviations, and Acronyms**

**ABC** – Approved Budget for the Contract.

**ARCC** – Allowable Range of Contract Cost.

**BAC** – Bids and Awards Committee.

**Bid** – A signed offer or proposal to undertake a contract submitted by a bidder in response to and in consonance with the requirements of the bidding documents. Also referred to as *Proposal* and *Tender*. (2016 revised IRR, Section 5[c])

**Bidder** – Refers to a contractor, manufacturer, supplier, distributor and/or consultant who submits a bid in response to the requirements of the Bidding Documents. (2016 revised IRR, Section 5[d])

**Bidding Documents** – The documents issued by the Procuring Entity as the bases for bids, furnishing all information necessary for a prospective bidder to prepare a bid for the Goods, Infrastructure Projects, and/or Consulting Services required by the Procuring Entity. (2016 revised IRR, Section 5[e])

**BIR** – Bureau of Internal Revenue.

**BSP** – Bangko Sentral ng Pilipinas.

**CDA** – Cooperative Development Authority.

**Consulting Services** – Refer to services for Infrastructure Projects and other types of projects or activities of the GOP requiring adequate external technical and professional expertise that are beyond the capability and/or capacity of the GOP to undertake such as, but not limited to: (i) advisory and review services; (ii) pre-investment or feasibility studies; (iii) design; (iv) construction supervision; (v) management and related services; and (vi) other technical services or special studies. (2016 revised IRR, Section 5[i])

**Contract** – Refers to the agreement entered into between the Procuring Entity and the Supplier or Manufacturer or Distributor or Service Provider for procurement of Goods and Services; Contractor for Procurement of Infrastructure Projects; or Consultant or Consulting Firm for Procurement of Consulting Services; as the case may be, as recorded in the Contract Form signed by the parties, including all attachments and appendices thereto and all documents incorporated by reference therein.

**Contractor** – is a natural or juridical entity whose proposal was accepted by the Procuring Entity and to whom the Contract to execute the Work was

awarded. Contractor as used in these Bidding Documents may likewise refer to a supplier, distributor, manufacturer, or consultant.

**CPI** – Consumer Price Index.

**DOLE** – Department of Labor and Employment.

**DTI** – Department of Trade and Industry.

**Foreign-funded Procurement or Foreign-Assisted Project** – Refers to procurement whose funding source is from a foreign government, foreign or international financing institution as specified in the Treaty or International or Executive Agreement. (2016 revised IRR, Section 5[b]).

**GFI** – Government Financial Institution.

**GOCC** – Government-owned and/or –controlled corporation.

**Goods** – Refer to all items, supplies, materials and general support services, except Consulting Services and Infrastructure Projects, which may be needed in the transaction of public businesses or in the pursuit of any government undertaking, project or activity, whether in the nature of equipment, furniture, stationery, materials for construction, or personal property of any kind, including non-personal or contractual services such as the repair and maintenance of equipment and furniture, as well as trucking, hauling, janitorial, security, and related or analogous services, as well as procurement of materials and supplies provided by the Procuring Entity for such services. The term “related” or “analogous services” shall include, but is not limited to, lease or purchase of office space, media advertisements, health maintenance services, and other services essential to the operation of the Procuring Entity. (2016 revised IRR, Section 5[r])

**GOP** – Government of the Philippines.

**Infrastructure Projects** – Include the construction, improvement, rehabilitation, demolition, repair, restoration or maintenance of roads and bridges, railways, airports, seaports, communication facilities, civil works components of information technology projects, irrigation, flood control and drainage, water supply, sanitation, sewerage and solid waste management systems, shore protection, energy/power and electrification facilities, national buildings, school buildings, hospital buildings, and other related construction projects of the government. Also referred to as *civil works or works*. (2016 revised IRR, Section 5[u])

**LGUs** – Local Government Units.

**NFCC** – Net Financial Contracting Capacity.

**NGA** – National Government Agency.

**PCAB** – Philippine Contractors Accreditation Board.

**PhilGEPS** - Philippine Government Electronic Procurement System.

**Procurement Project** – refers to a specific or identified procurement covering goods, infrastructure project or consulting services. A Procurement Project shall be described, detailed, and scheduled in the Project Procurement Management Plan prepared by the agency which shall be consolidated in the procuring entity's Annual Procurement Plan. (GPPB Circular No. 06-2019 dated 17 July 2019)

**PSA** – Philippine Statistics Authority.

**SEC** – Securities and Exchange Commission.

**SLCC** – Single Largest Completed Contract.

**UN** – United Nations.





# ***Section I. Invitation to Bid***

## **Notes on the Invitation to Bid**

The Invitation to Bid (IB) provides information that enables potential Bidders to decide whether to participate in the procurement at hand. The IB shall be posted in accordance with Section 21.2 of the 2016 revised IRR of RA No. 9184.

Apart from the essential items listed in the Bidding Documents, the IB should also indicate the following:

- a. The date of availability of the Bidding Documents, which shall be from the time the IB is first advertised/posted until the deadline for the submission and receipt of bids;
- b. The place where the Bidding Documents may be acquired or the website where it may be downloaded;
- c. The deadline for the submission and receipt of bids; and
- d. Any important bid evaluation criteria.

The IB should be incorporated into the Bidding Documents. The information contained in the IB must conform to the Bidding Documents and in particular to the relevant information in the Bid Data Sheet.



Republic of the Philippines  
 Department of Education  
 Region VI – Western Visayas  
**SCHOOLS DIVISION OF AKLAN**  
 Poblacion, Numancia, Aklan



## Invitation to Bid for CY 2022 BASIC EDUCATION FACILITIES FUND (BEFF) REPAIR AND REHABILITATION OF SCHOOL BUILDINGS

Project No.: **DepED-RO6-D1-2022-BEFF-REPAIR-009-010-2022**

- The Department of Education Schools Division of Aklan, through the Bids and Awards Committee (BAC) intends to apply the sum **Four Million Seven Hundred Three Thousand Three Hundred Forty Pesos and 70/100 (Php4,703,340.70)** being the ABC to payments under the contract for **CY 2022 Basic Education Facilities Fund (BEFF) Repair and Rehabilitation of Classrooms School Buildings**. Bids received in excess of the ABC for each lot shall be automatically rejected at bid opening.

Lot No.	Project Description	Location	Amount per School	TOTAL ABC	Contract Duration
<b>1</b>	<b>Repair and Rehabilitation of Classrooms School Building</b>	<b>Bel-is ES Buruanga, Aklan</b>	<b>Php829,930.76</b>	<b>Php2,121,205.09</b>	<b>120 C.D.</b>
		<b>Tigum ES Buruanga, Aklan</b>	<b>Php1,291,274.33</b>		
<b>2</b>	<b>Repair and Rehabilitation of Classrooms School Building</b>	<b>Bugasongan ES Lezo, Aklan</b>	<b>Php1,059,858.60</b>	<b>Php2,582,135.61</b>	<b>120 C.D.</b>
		<b>Dapdap ES Tangalan, Aklan</b>	<b>Php742,820.94</b>		
		<b>Jawili IS Tangalan, Aklan</b>	<b>Php779,456.07</b>		
<b>TOTAL</b>				<b>Php4,703,340.70</b>	

- The Department of Education Schools Division of Aklan through the Bids and Awards Committee (BAC) now invites bids for the above-mentioned Procurement Project. Completion of the Works is required by **One Hundred Twenty (120) Calendar Days**. Bidders should have completed within **three (3) years** from the date of submission and receipt of bids, a contract similar to the Project. The description of an eligible bidder is contained in the Bidding Documents, particularly, in Section II (Instructions to Bidders).
- Bidding will be conducted through open competitive bidding procedures using non-discretionary “*pass/fail*” criterion as specified

in the 2016 revised Implementing Rules and Regulations (IRR) of Republic Act (RA) No. 9184.

- a. Bidding is restricted to Filipino citizens/sole proprietorships, partnerships, or organizations with at least sixty percent (60%) interest or outstanding capital stock belonging to citizens of the Philippines, and to citizens or organizations of a country the laws or regulations of which grant similar rights or privileges to Filipino citizens, pursuant to RA No. 5183.
4. Interested bidders may obtain further information from Department of Education Schools Division of Aklan – Bids and Awards Committee and inspect the Bidding Documents at the address given below, **from Monday to Friday, 8:00 A.M to 5:00 PM.**
5. A complete set of Bidding Documents may be acquired by interested bidders on **March 8, 2022 to March 28, 2021** from given address and website/s below.

Amount of Bidding Documents shall be as follows:

Lot No.	Amount (in Php)
1	Php5,000.00
2	Php5,000.00

**The Procuring Entity shall allow the bidder to present its proof of payment for the fees in person.**

6. The Department of Education Schools Division of Aklan will hold a Pre-Bid Conference on **March 15, 2022, 9:00 A.M. Kalibo Pilot Elementary School, Kalibo, Aklan**, which shall be open to prospective bidders.
7. All bids must be accompanied by a bid security in any of the acceptable forms and in the amount stated in **ITB** Clause 16.
8. Bids must be duly received by the Bids and Awards Committee of the Department of Education Schools Division of Aklan at **Kalibo Pilot Elementary School, Kalibo, Aklan** on or before **March 28, 2022, 9:00 A.M. Online or electronic submission is not allowed. Late bids shall not be accepted.**
9. Bid opening shall be on **March 28, 9:00 A.M at Kalibo Pilot Elementary School, Kalibo, Aklan**. Bids will be opened in the presence of the bidders' representatives who choose to attend the activity.

10. The Department of Education Division of Aklan reserves the right to reject any and all bids, declare a failure of bidding, or not award the contract at any time prior to contract award in accordance with Sections 35.6 and 41 of the 2016 revised Implementing Rules and Regulations (IRR) of RA No. 9184, without thereby incurring any liability to the affected bidder or bidders.

11. For further information, please refer to:

**EDSELYN T. BIRAY**

Secretariat

Bids and Awards Committee (BAC)

Department of Education, Schools Division of Aklan

Poblacion, Numancia, Aklan

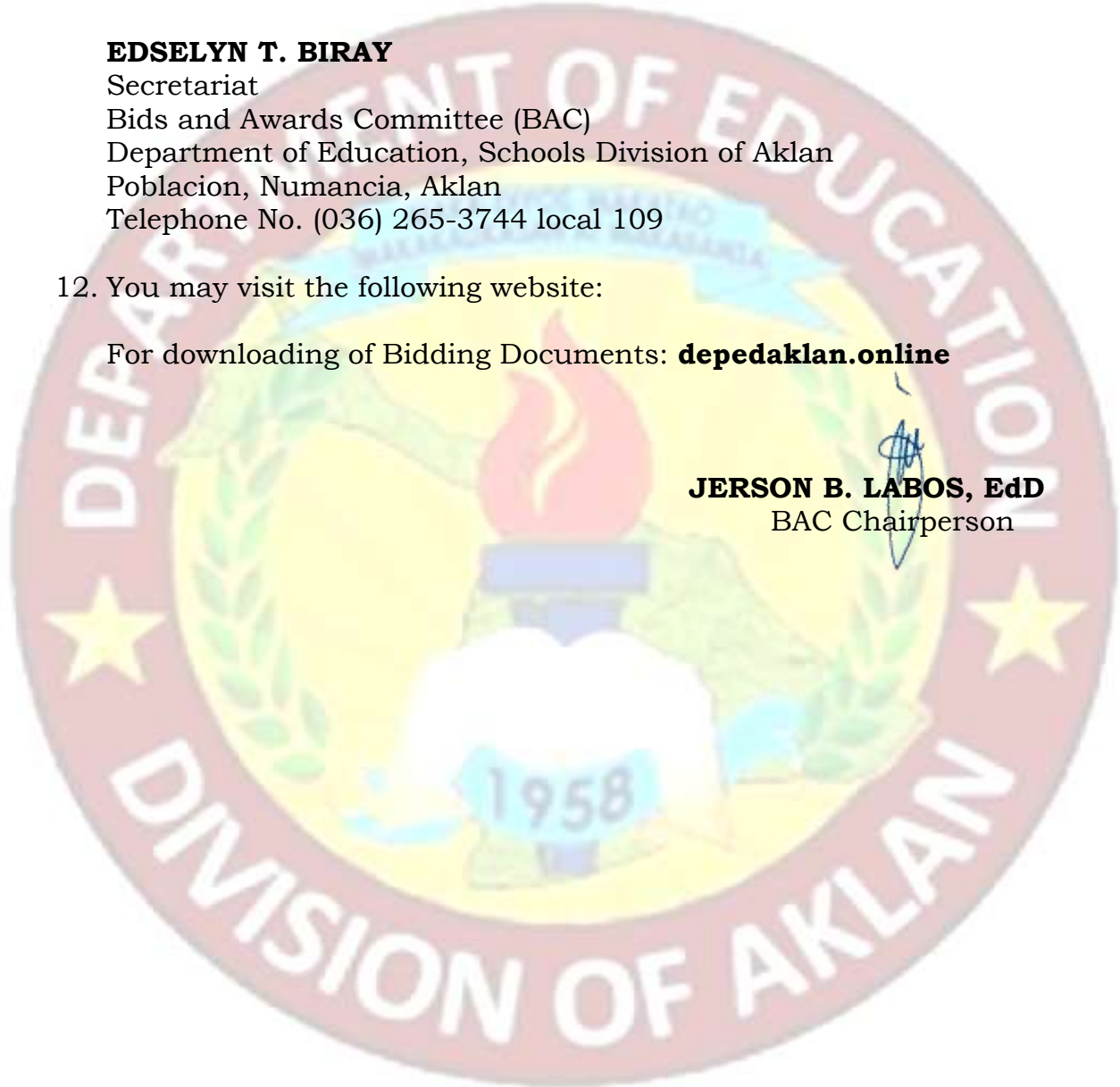
Telephone No. (036) 265-3744 local 109

12. You may visit the following website:

For downloading of Bidding Documents: **[depedaklan.online](http://depedaklan.online)**

**JERSON B. LABOS, EdD**

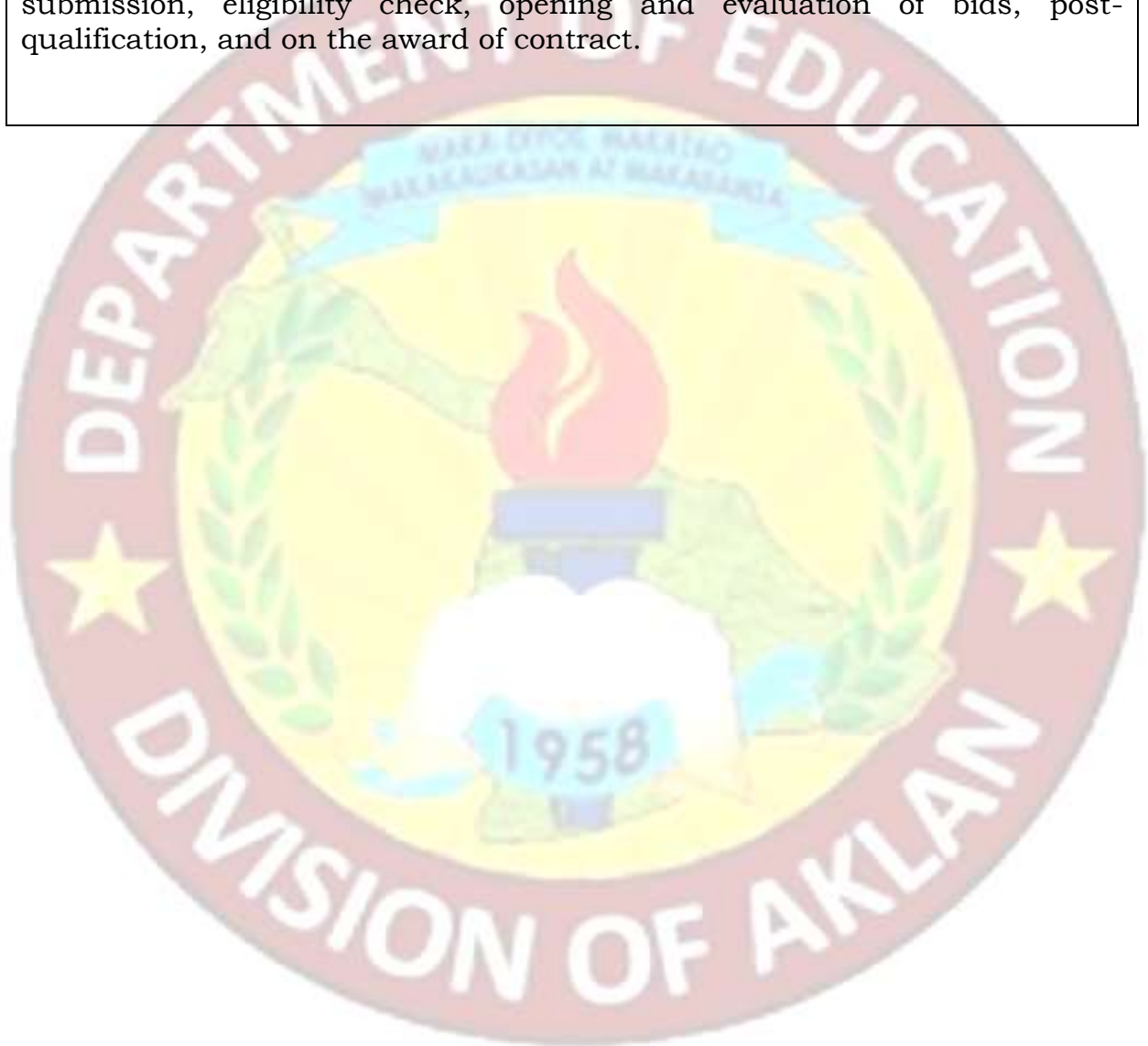
BAC Chairperson



## ***Section II. Instructions to Bidders***

### **Notes on the Instructions to Bidders**

This Section on the Instruction to Bidders (ITB) provides the information necessary for bidders to prepare responsive bids, in accordance with the requirements of the Procuring Entity. It also provides information on bid submission, eligibility check, opening and evaluation of bids, post-qualification, and on the award of contract.



## 1. Scope of Bid

The Procuring Entity, Department of Education Schools Division of Aklan wishes to receive Bids for the **CY 2021 Basic Education Facilities Fund (BEFF) Repair and Rehabilitation of Classrooms School Building in the schools Division of Aklan** with identification numbers, **DepED-RO6-D1-2022-BEFF-REPAIR-009-010-2022**.

The Procurement Project (referred to herein as “Project”) is for the construction of Works, as described in Section VI (Specifications).

## 2. Funding Information

2.1. The GOP through the source of funding as indicated below for **FY 2022** in the amount of **Four Million Seven Hundred Three Thousand Three Hundred Forty Pesos and 70/100 (Php4,703,340.70)**

2.2. The source of funding is **NGA, the General Appropriations Act or Special Appropriations**.

## 3. Bidding Requirements

The Bidding for the Project shall be governed by all the provisions of RA No. 9184 and its 2016 revised IRR, including its Generic Procurement Manual and associated policies, rules and regulations as the primary source thereof, while the herein clauses shall serve as the secondary source thereof.

Any amendments made to the IRR and other GPPB issuances shall be applicable only to the ongoing posting, advertisement, or invitation to bid by the BAC through the issuance of a supplemental or bid bulletin.

The Bidder, by the act of submitting its Bid, shall be deemed to have inspected the site, determined the general characteristics of the contracted Works and the conditions for this Project, such as the location and the nature of the work; (b) climatic conditions; (c) transportation facilities; (c) nature and condition of the terrain, geological conditions at the site communication facilities, requirements, location and availability of construction aggregates and other materials, labor, water, electric power and access roads; and (d) other factors that may affect the cost, duration and execution or implementation of the contract, project, or work and examine all instructions, forms, terms, and project requirements in the Bidding Documents.

#### **4. Corrupt, Fraudulent, Collusive, Coercive, and Obstructive Practices**

The Procuring Entity, as well as the Bidders and Contractors, shall observe the highest standard of ethics during the procurement and execution of the contract. They or through an agent shall not engage in corrupt, fraudulent, collusive, coercive, and obstructive practices defined under Annex “I” of the 2016 revised IRR of RA No. 9184 or other integrity violations in competing for the Project.

#### **5. Eligible Bidders**

5.1. Only Bids of Bidders found to be legally, technically, and financially capable will be evaluated.

5.2. The Bidder must have an experience of having completed a Single Largest Completed Contract (SLCC) that is similar to this Project, equivalent to at least fifty percent (50%) of the ABC adjusted, if necessary, by the Bidder to current prices using the PSA’s CPI, except under conditions provided for in Section 23.4.2.4 of the 2016 revised IRR of RA No. 9184.

A contract is considered to be “similar” to the contract to be bid if it has the major categories of work stated in the **BDS**.

5.3. For Foreign-funded Procurement, the Procuring Entity and the foreign government/foreign or international financing institution may agree on another track record requirement, as specified in the Bidding Document prepared for this purpose.

5.4. The Bidders shall comply with the eligibility criteria under Section 23.4.2 of the 2016 IRR of RA No. 9184.

#### **6. Origin of Associated Goods**

There is no restriction on the origin of Goods other than those prohibited by a decision of the UN Security Council taken under Chapter VII of the Charter of the UN.

#### **7. Subcontracts**

7.1. The Bidder may subcontract portions of the Project to the extent allowed by the Procuring Entity as stated herein, but in no case more than fifty percent (50%) of the Project.

The Procuring Entity has prescribed that **Subcontracting is not allowed.**

## **8. Pre-Bid Conference**

The Procuring Entity will hold a pre-bid conference for this Project on the specified date and time and either at its physical address as indicated in paragraph 6 of the **IB**.

## **9. Clarification and Amendment of Bidding Documents**

Prospective bidders may request for clarification on and/or interpretation of any part of the Bidding Documents. Such requests must be in writing and received by the Procuring Entity, either at its given address or through electronic mail indicated in the **IB**, at least ten (10) calendar days before the deadline set for the submission and receipt of Bids.

## **10. Documents Comprising the Bid: Eligibility and Technical Components**

10.1. The first envelope shall contain the eligibility and technical documents of the Bid as specified in **Section IX. Checklist of Technical and Financial Documents**.

10.2. If the eligibility requirements or statements, the bids, and all other documents for submission to the BAC are in foreign language other than English, it must be accompanied by a translation in English, which shall be authenticated by the appropriate Philippine foreign service establishment, post, or the equivalent office having jurisdiction over the foreign bidder's affairs in the Philippines. For Contracting Parties to the Apostille Convention, only the translated documents shall be authenticated through an apostille pursuant to GPPB Resolution No. 13-2019 dated 23 May 2019. The English translation shall govern, for purposes of interpretation of the bid.

10.3. A valid PCAB License is required, and in case of joint ventures, a valid special PCAB License, and registration for the type and cost of the contract for this Project. Any additional type of Contractor license or permit shall be indicated in the **BDS**.

10.4. A List of Contractor's key personnel (e.g., Project Manager, Project Engineers, Materials Engineers, and Foremen) assigned to the contract to be bid, with their complete qualification and experience data shall be provided. These key personnel must meet the required minimum years of experience set in the **BDS**.



10.5. A List of Contractor's major equipment units, which are owned, leased, and/or under purchase agreements, supported by proof of ownership, certification of availability of equipment from the equipment lessor/vendor for the duration of the project, as the case may be, must meet the minimum requirements for the contract set in the **BDS**.

## **11. Documents Comprising the Bid: Financial Component**

11.1. The second bid envelope shall contain the financial documents for the Bid as specified in **Section IX. Checklist of Technical and Financial Documents**.

11.2. Any bid exceeding the ABC indicated in paragraph 1 of the **IB** shall not be accepted.

11.3. For Foreign-funded procurement, a ceiling may be applied to bid prices provided the conditions are met under Section 31.2 of the 2016 revised IRR of RA No. 9184.

## **12. Alternative Bids**

Bidders shall submit offers that comply with the requirements of the Bidding Documents, including the basic technical design as indicated in the drawings and specifications. Unless there is a value engineering clause in the **BDS**, alternative Bids shall not be accepted.

## **13. Bid Prices**

All bid prices for the given scope of work in the Project as awarded shall be considered as fixed prices, and therefore not subject to price escalation during contract implementation, except under extraordinary circumstances as determined by the NEDA and approved by the GPPB pursuant to the revised Guidelines for Contract Price Escalation guidelines.

## **14. Bid and Payment Currencies**

14.1. Bid prices may be quoted in the local currency or tradeable currency accepted by the BSP at the discretion of the Bidder. However, for purposes of bid evaluation, Bids denominated in foreign currencies shall be converted to Philippine currency based on the exchange rate as published in the BSP reference rate bulletin on the day of the bid opening.

14.2. Payment of the contract price shall be made in **Philippine Pesos**.

## 15. Bid Security

15.1. The Bidder shall submit a Bid Securing Declaration or any form of Bid Security in the amount indicated in the **BDS**, which shall be not less than the percentage of the ABC in accordance with the schedule in the **BDS**.

15.2. The Bid and bid security shall be valid until **120 Calendar Days**. Any bid not accompanied by an acceptable bid security shall be rejected by the Procuring Entity as non-responsive.

## 16. Sealing and Marking of Bids

Each Bidder shall submit one copy of the first and second components of its Bid.

**The Procuring Entity requests the submission of original copy of the First and Second Components and two (2) additional copies in separate envelopes.** However, failure of the Bidders to comply with the said request shall not be a ground for disqualification.

The bidders are requested to provide a Table of Contents and corresponding tab/label for each submitted technical and financial components to help ensure completeness of submission by the bidders and facilitate examination by the BAC.

## 17. Deadline for Submission of Bids

The Bidders shall submit on the specified date and time and either at its physical address or through online submission as indicated in paragraph 7 of the **IB**.

## 18. Opening and Preliminary Examination of Bids

18.1. The BAC shall open the Bids in public at the time, on the date, and at the place specified in paragraph 9 of the **IB**. The Bidders' representatives who are present shall sign a register evidencing their attendance. In case videoconferencing, webcasting or other similar technologies will be used, attendance of participants shall likewise be recorded by the BAC Secretariat.

In case the Bids cannot be opened as scheduled due to justifiable reasons, the rescheduling requirements under Section 29 of the 2016 revised IRR of RA No. 9184 shall prevail.

18.2. The preliminary examination of Bids shall be governed by Section 30 of the 2016 revised IRR of RA No. 9184.

## 19. Detailed Evaluation and Comparison of Bids

19.1. The Procuring Entity's BAC shall immediately conduct a detailed evaluation of all Bids rated "*passed*" using non-discretionary pass/fail criteria. The BAC shall consider the conditions in the evaluation of Bids under Section 32.2 of 2016 revised IRR of RA No. 9184.

19.2. If the Project allows partial bids, all Bids and combinations of Bids as indicated in the **BDS** shall be received by the same deadline and opened and evaluated simultaneously so as to determine the Bid or combination of Bids offering the lowest calculated cost to the Procuring Entity. Bid Security as required by **ITB** Clause 15 shall be submitted for each contract (lot) separately.

19.3. In all cases, the NFCC computation pursuant to Section 23.4.2.6 of the 2016 revised IRR of RA No. 9184 must be sufficient for the total of the ABCs for all the lots participated in by the prospective Bidder.

19.4. The Project shall be awarded as follows:

**One Project having several items grouped into several lots, which shall be awarded as separate contracts per lot.**

## 20. Post Qualification

Within a non-extendible period of five (5) calendar days from receipt by the Bidder of the notice from the BAC that it submitted the Lowest Calculated Bid, the Bidder shall submit its latest income and business tax returns filed and paid through the BIR Electronic Filing and Payment System (eFPS), and other appropriate licenses and permits required by law and stated in the **BDS**.

## 21. Signing of the Contract

The documents required in Section 37.2 of the 2016 revised IRR of RA No. 9184 shall form part of the Contract. Additional Contract documents are indicated in the **BDS**.

## **Section III. Bid Data Sheet**

### **Notes on the Bid Data Sheet (BDS)**

The Bid Data Sheet (BDS) consists of provisions that supplement, amend, or specify in detail, information, or requirements included in the ITB found in Section II, which are specific to each procurement.

This Section is intended to assist the Procuring Entity in providing the specific information in relation to corresponding clauses in the ITB and has to be prepared for each specific procurement.

The Procuring Entity should specify in the BDS information and requirements specific to the circumstances of the Procuring Entity, the processing of the procurement, and the bid evaluation criteria that will apply to the Bids. In preparing the BDS, the following aspects should be checked:

- a. Information that specifies and complements provisions of the ITB must be incorporated.
- b. Amendments and/or supplements, if any, to provisions of the ITB as necessitated by the circumstances of the specific procurement, must also be incorporated.

# Bid Data Sheet

ITB Clause	
5.2	For this purpose, contracts similar to the Project refer to contracts which have the same major categories of work, which shall be: <i>[provide description/clarification of what are major categories of work].</i>
7.1	<b>Subcontracting is not allowed.</b>
10.3	<b>Not applicable.</b>
10.4	<p>The key personnel must meet the required minimum years of experience set below:</p> <ol style="list-style-type: none"> <li>1. List of Contractors Personnel (SF-INFR-48) to be assigned the contract to be bid with their respective curriculum vitae showing among others, their educational attainment, professional qualification and experience (Form SF-INFR-48).               <ol style="list-style-type: none"> <li>a. Project Manager/General Forman</li> <li>b. Licensed Civil Engineer</li> <li>c. Painter</li> <li>d. Welder</li> <li>e. Carpenter</li> <li>f. Mason</li> <li>g. Helper</li> <li>h. Health and Safety Engineer/Officer with valid Certificate of Training in Occupational Safety and Health</li> </ol> </li> </ol> <p>The supporting documents stated in the said form shall be submitted during post-qualification evaluation. Duplication of functions of Key Personnel for the project shall not be allowed.</p> <p>In the event that the bidder intends to participate in the procurement of two (2) or more projects, overlapping of Key Personnel shall not be allowed.</p> <ol style="list-style-type: none"> <li>2. Duly Signed Statement of Availability of Key Personnel and Equipment (Form SF-INFR-18)</li> </ol>

10.5	<p>The minimum major equipment requirements are the following:</p> <ul style="list-style-type: none"> <li>a. Hand Tools</li> <li>b. One-Bagger Mixer</li> <li>c. Welding Machine</li> <li>d. Bar Cutter</li> </ul> <p>List of Contractor's Equipment OWNED/LEASED and/or UNDER PURCHASED AGREEMENT assigned to the Proposed Contract (FORM SF-INFR-49).</p> <p>Proof of Ownership or certification of availability of equipment from the equipment lessor/vendor for the duration of the project, as the case may be; shall be submitted during post-qualification evaluation.</p> <p>In the event that the bidder intends to participate in the procurement of two (2) or more projects, overlapping of Pledged Equipment shall not be allowed.</p>
12	<b>No further instructions.</b>
15.1	<p>The bid security shall be in the form of a Bid Securing Declaration or any of the following forms and amounts:</p> <ul style="list-style-type: none"> <li>a. The amount of not less than <i>(2%) of ABC</i>], if bid security is in cash, cashier's/manager's check, bank draft/guarantee or irrevocable letter of credit; <ul style="list-style-type: none"> <li>• <b>Lot 1 – Php42,424.10</b></li> <li>• <b>Lot 2 – Php51,642.71</b></li> </ul> </li> <li>b. The amount of not less than <i>(5%) of ABC</i>] if bid security is in Surety Bond. <ul style="list-style-type: none"> <li>• <b>Lot 1 – Php106,060.25</b></li> <li>• <b>Lot 2 – Php129,106.78</b></li> </ul> </li> </ul>
16	<b>Each Bidder shall submit one (1) original hard copy and two (2) duplicate hard copies labeled as Copy 1 and Copy 2.</b>
19.2	No Partial Bid will be accepted.

20	<p><i>The following evaluation requirements:</i></p> <ol style="list-style-type: none"> <li><i>1. Latest income and business tax returns for the last six months preceding the date of bid submission filed and paid through BIR Electronic Filing and Payment System (eFPS);</i></li> <li><i>2. The supporting documents required for the following Forms: a. Statement of All On-Going Government and Private Contracts (SF-INFR-15)</i></li> </ol>
21	<p>Additional contract documents relevant to the Project that may be required by existing laws and/or the Procuring Entity, such as construction schedule and S-curve, manpower schedule, construction methods, equipment utilization schedule, construction safety and health program approved by the DOLE, and other acceptable tools of project scheduling.</p>



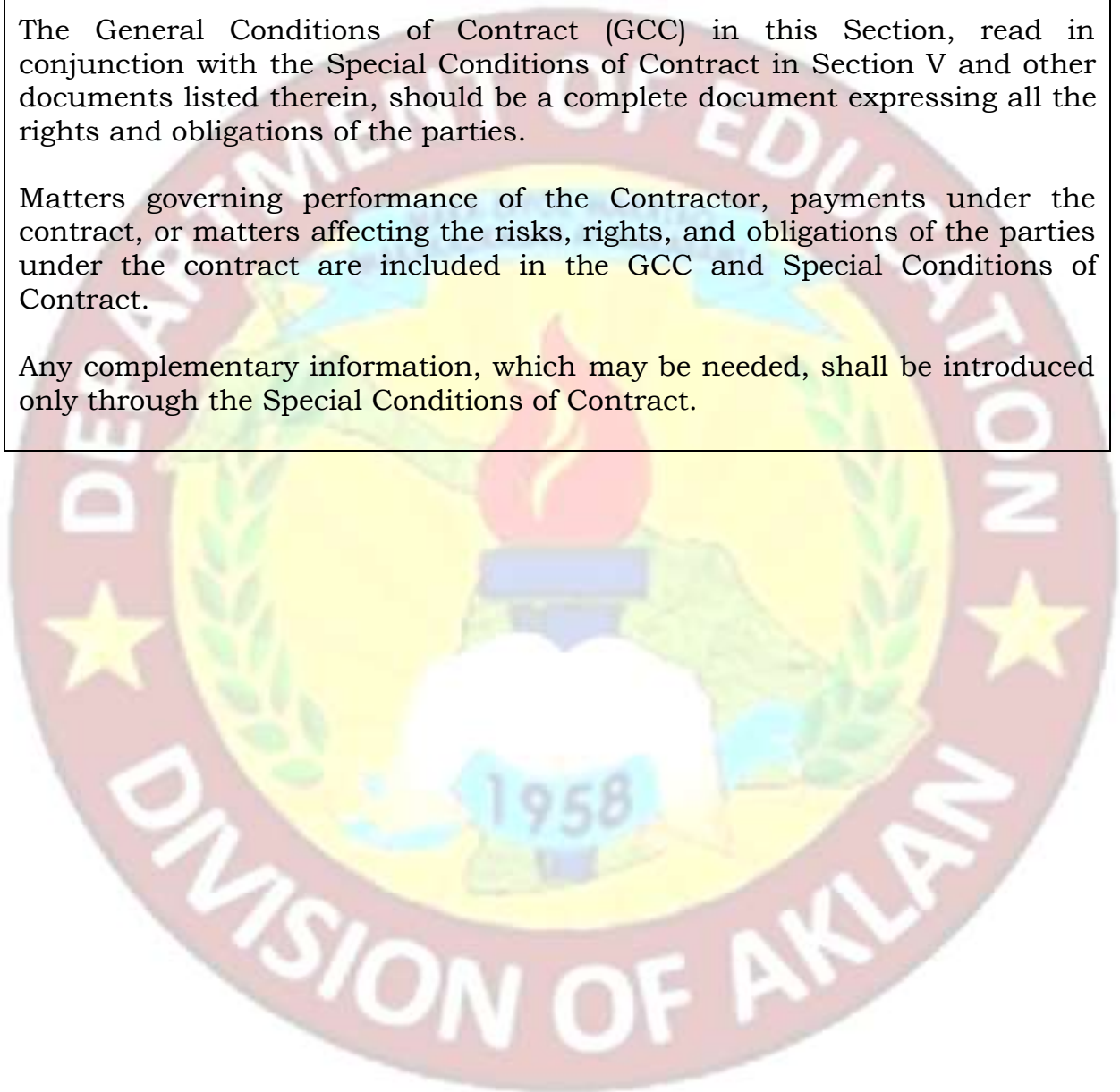
## ***Section IV. General Conditions of Contract***

### **Notes on the General Conditions of Contract**

The General Conditions of Contract (GCC) in this Section, read in conjunction with the Special Conditions of Contract in Section V and other documents listed therein, should be a complete document expressing all the rights and obligations of the parties.

Matters governing performance of the Contractor, payments under the contract, or matters affecting the risks, rights, and obligations of the parties under the contract are included in the GCC and Special Conditions of Contract.

Any complementary information, which may be needed, shall be introduced only through the Special Conditions of Contract.





## 1. **Scope of Contract**

This Contract shall include all such items, although not specifically mentioned, that can be reasonably inferred as being required for its completion as if such items were expressly mentioned herein. All the provisions of RA No. 9184 and its 2016 revised IRR, including the Generic Procurement Manual, and associated issuances, constitute the primary source for the terms and conditions of the Contract, and thus, applicable in contract implementation. Herein clauses shall serve as the secondary source for the terms and conditions of the Contract.

This is without prejudice to Sections 74.1 and 74.2 of the 2016 revised IRR of RA No. 9184 allowing the GPPB to amend the IRR, which shall be applied to all procurement activities, the advertisement, posting, or invitation of which were issued after the effectivity of the said amendment.

## 2. **Sectional Completion of Works**

If sectional completion is specified in the **Special Conditions of Contract (SCC)**, references in the Conditions of Contract to the Works, the Completion Date, and the Intended Completion Date shall apply to any Section of the Works (other than references to the Completion Date and Intended Completion Date for the whole of the Works).

## 3. **Possession of Site**

3.1 The Procuring Entity shall give possession of all or parts of the Site to the Contractor based on the schedule of delivery indicated in the **SCC**, which corresponds to the execution of the Works. If the Contractor suffers delay or incurs cost from failure on the part of the Procuring Entity to give possession in accordance with the terms of this clause, the Procuring Entity's Representative shall give the Contractor a Contract Time Extension and certify such sum as fair to cover the cost incurred, which sum shall be paid by Procuring Entity.

3.2 If possession of a portion is not given by the above date, the Procuring Entity will be deemed to have delayed the start of the relevant activities. The resulting adjustments in contract time to address such delay may be addressed through contract extension provided under Annex "E" of the 2016 revised IRR of RA No. 9184.

#### **4. The Contractor's Obligations**

The Contractor shall employ the key personnel named in the Schedule of Key Personnel indicating their designation, in accordance with **ITB** Clause 10.3 and specified in the **BDS**, to carry out the supervision of the Works.

The Procuring Entity will approve any proposed replacement of key personnel only if their relevant qualifications and abilities are equal to or better than those of the personnel listed in the Schedule.

#### **5. Performance Security**

5.1. Within ten (10) calendar days from receipt of the Notice of Award from the Procuring Entity but in no case later than the signing of the contract by both parties, the successful Bidder shall furnish the performance security in any of the forms prescribed in Section 39 of the 2016 revised IRR.

5.2. The Contractor, by entering into the Contract with the Procuring Entity, acknowledges the right of the Procuring Entity to institute action pursuant to RA No. 3688 against any subcontractor be they an individual, firm, partnership, corporation, or association supplying the Contractor with labor, materials and/or equipment for the performance of this Contract.

#### **6. Site Investigation Reports**

The Contractor, in preparing the Bid, shall rely on any Site Investigation Reports referred to in the **SCC** supplemented by any information obtained by the Contractor.

#### **7. Warranty**

7.1. In case the Contractor fails to undertake the repair works under Section 62.2.2 of the 2016 revised IRR, the Procuring Entity shall forfeit its performance security, subject its property(ies) to attachment or garnishment proceedings, and perpetually disqualify it from participating in any public bidding. All payables of the GOP in his favor shall be offset to recover the costs.

7.2. The warranty against Structural Defects/Failures, except that occasioned-on force majeure, shall cover the period from the date of issuance of the Certificate of Final Acceptance by the Procuring Entity. Specific duration of the warranty is found in the **SCC**.

## **8. Liability of the Contractor**

Subject to additional provisions, if any, set forth in the **SCC**, the Contractor's liability under this Contract shall be as provided by the laws of the Republic of the Philippines.

If the Contractor is a joint venture, all partners to the joint venture shall be jointly and severally liable to the Procuring Entity.

## **9. Termination for Other Causes**

Contract termination shall be initiated in case it is determined *prima facie* by the Procuring Entity that the Contractor has engaged, before, or during the implementation of the contract, in unlawful deeds and behaviors relative to contract acquisition and implementation, such as, but not limited to corrupt, fraudulent, collusive, coercive, and obstructive practices as stated in **ITB** Clause 4.

## **10. Dayworks**

Subject to the guidelines on Variation Order in Annex "E" of the 2016 revised IRR of RA No. 9184, and if applicable as indicated in the **SCC**, the Dayworks rates in the Contractor's Bid shall be used for small additional amounts of work only when the Procuring Entity's Representative has given written instructions in advance for additional work to be paid for in that way.

## **11. Program of Work**

11.1. The Contractor shall submit to the Procuring Entity's Representative for approval the said Program of Work showing the general methods, arrangements, order, and timing for all the activities in the Works. The submissions of the Program of Work are indicated in the **SCC**.

11.2. The Contractor shall submit to the Procuring Entity's Representative for approval an updated Program of Work at intervals no longer than the period stated in the **SCC**. If the Contractor does not submit an updated Program of Work within this period, the Procuring Entity's Representative may withhold the amount stated in the **SCC** from the next payment certificate and continue to withhold this amount until the next payment after the date on which the overdue Program of Work has been submitted.

## **12. Instructions, Inspections and Audits**

The Contractor shall permit the GOP or the Procuring Entity to inspect the Contractor's accounts and records relating to the performance of the Contractor and to have them audited by auditors of the GOP or the Procuring Entity, as may be required.

## **13. Advance Payment**

The Procuring Entity shall, upon a written request of the Contractor which shall be submitted as a Contract document, make an advance payment to the Contractor in an amount not exceeding fifteen percent (15%) of the total contract price, to be made in lump sum, or at the most two installments according to a schedule specified in the **SCC**, subject to the requirements in Annex "E" of the 2016 revised IRR of RA No. 9184.

## **14. Progress Payments**

The Contractor may submit a request for payment for Work accomplished. Such requests for payment shall be verified and certified by the Procuring Entity's Representative/Project Engineer. Except as otherwise stipulated in the **SCC**, materials and equipment delivered on the site but not completely put in place shall not be included for payment.

## **15. Operating and Maintenance Manuals**

15.1. If required, the Contractor will provide "as built" Drawings and/or operating and maintenance manuals as specified in the **SCC**.

15.2. If the Contractor does not provide the Drawings and/or manuals by the dates stated above, or they do not receive the Procuring Entity's Representative's approval, the Procuring Entity's Representative may withhold the amount stated in the **SCC** from payments due to the Contractor.

## **Section V. Special Conditions of Contract**

### **Notes on the Special Conditions of Contract**

Similar to the BDS, the clauses in this Section are intended to assist the Procuring Entity in providing contract-specific information in relation to corresponding clauses in the GCC found in Section IV.

The Special Conditions of Contract (SCC) complement the GCC, specifying contractual requirements linked to the special circumstances of the Procuring Entity, the Procuring Entity's country, the sector, and the Works procured. In preparing this Section, the following aspects should be checked:

- a. Information that complements provisions of the GCC must be incorporated.
- b. Amendments and/or supplements to provisions of the GCC as necessitated by the circumstances of the specific purchase, must also be incorporated.

However, no special condition which defeats or negates the general intent and purpose of the provisions of the GCC should be incorporated herein.

# Special Conditions of Contract

## Special Conditions of Contract

GCC Clause	
2	<b>No further instructions.</b>
4.1	<b>No further instructions.</b>
6	<b>No further instructions.</b>
7.2	<b>Fifteen (15) years.</b>
10	a. Dayworks are applicable at the rate shown in the Contractor's original Bid.
11.1	The Contractor shall submit the Program of Work to the Procuring Entity's Representative within <b>15 days</b> of delivery of the Notice of Award.
11.2	Not Applicable.
13	The amount of the advance payment is <b>15% mobilization</b>
14	<b>Not Applicable.</b>
15.1	No operating and maintenance manuals are required.  The date by which "as built" drawings are required is <b>seven (7) days after the request for variation order and ten (10) days prior to the request for final billing, if the as built plan is required by the DepEd Engineer necessary for works correction/s.</b>
15.2	<b>Not Applicable.</b>

## ***Section VI. Specifications***

### **Notes on Specifications**

A set of precise and clear specifications is a prerequisite for Bidders to respond realistically and competitively to the requirements of the Procuring Entity without qualifying or conditioning their Bids. In the context of international competitive bidding, the specifications must be drafted to permit the widest possible competition and, at the same time, present a clear statement of the required standards of workmanship, materials, and performance of the goods and services to be procured. Only if this is done will the objectives of economy, efficiency, and fairness in procurement be realized, responsiveness of Bids be ensured, and the subsequent task of bid evaluation facilitated. The specifications should require that all goods and materials to be incorporated in the Works be new, unused, of the most recent or current models, and incorporate all recent improvements in design and materials unless provided otherwise in the Contract.

Samples of specifications from previous similar projects are useful in this respect. The use of metric units is mandatory. Most specifications are normally written specially by the Procuring Entity or its representative to suit the Works at hand. There is no standard set of Specifications for universal application in all sectors in all regions, but there are established principles and practices, which are reflected in these PBDs.

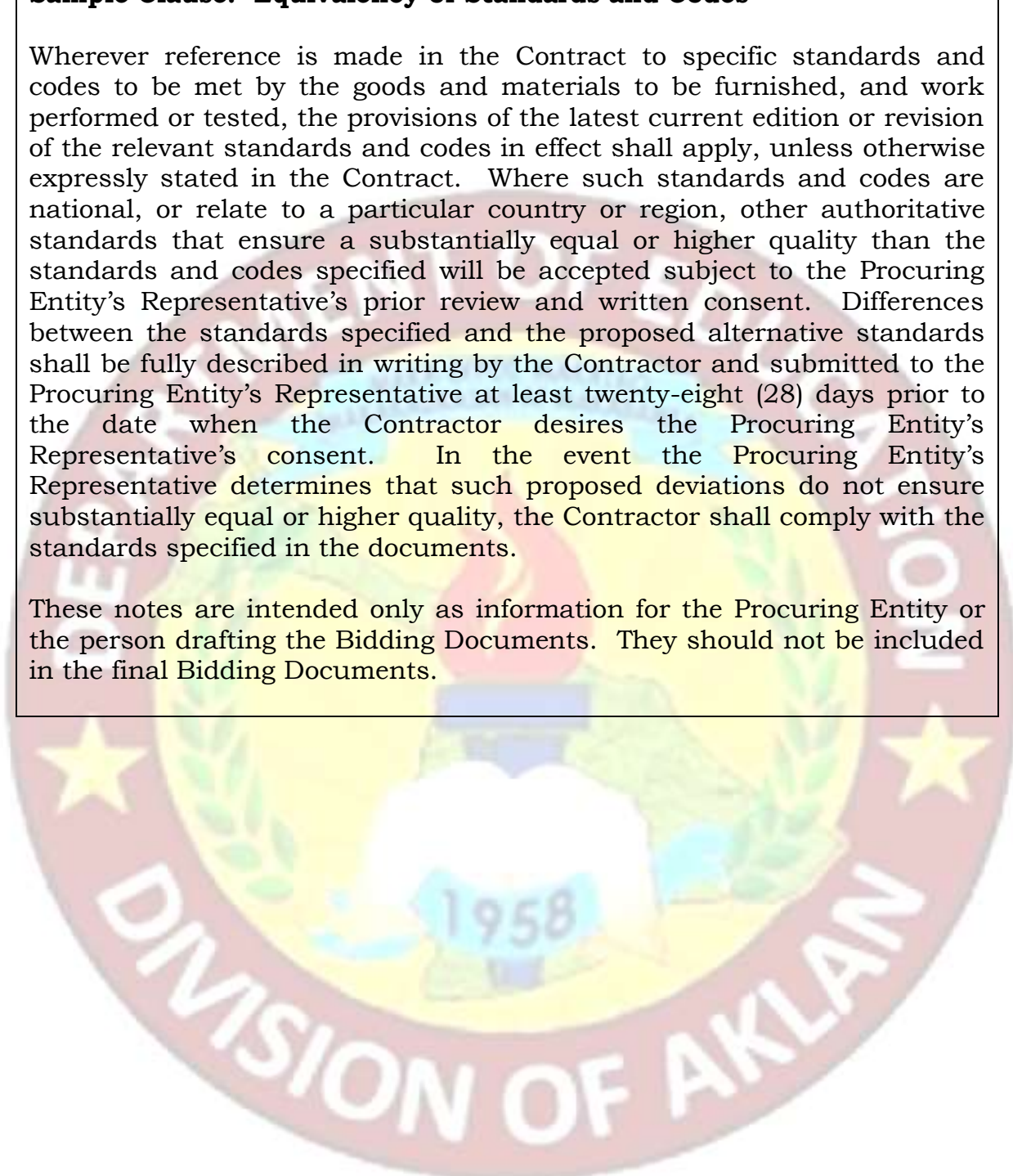
There are considerable advantages in standardizing General Specifications for repetitive Works in recognized public sectors, such as highways, ports, railways, urban housing, irrigation, and water supply, in the same country or region where similar conditions prevail. The General Specifications should cover all classes of workmanship, materials, and equipment commonly involved in construction, although not necessarily to be used in a particular Works Contract. Deletions or addenda should then adapt the General Specifications to the particular Works.

Care must be taken in drafting specifications to ensure that they are not restrictive. In the specification of standards for goods, materials, and workmanship, recognized international standards should be used as much as possible. Where other particular standards are used, whether national standards or other standards, the specifications should state that goods, materials, and workmanship that meet other authoritative standards, and which ensure substantially equal or higher quality than the standards mentioned, will also be acceptable. The following clause may be inserted in the SCC.

**Sample Clause: Equivalency of Standards and Codes**

Wherever reference is made in the Contract to specific standards and codes to be met by the goods and materials to be furnished, and work performed or tested, the provisions of the latest current edition or revision of the relevant standards and codes in effect shall apply, unless otherwise expressly stated in the Contract. Where such standards and codes are national, or relate to a particular country or region, other authoritative standards that ensure a substantially equal or higher quality than the standards and codes specified will be accepted subject to the Procuring Entity's Representative's prior review and written consent. Differences between the standards specified and the proposed alternative standards shall be fully described in writing by the Contractor and submitted to the Procuring Entity's Representative at least twenty-eight (28) days prior to the date when the Contractor desires the Procuring Entity's Representative's consent. In the event the Procuring Entity's Representative determines that such proposed deviations do not ensure substantially equal or higher quality, the Contractor shall comply with the standards specified in the documents.

These notes are intended only as information for the Procuring Entity or the person drafting the Bidding Documents. They should not be included in the final Bidding Documents.





## ***Section VII. Drawings***



*DepEd and DPWH Approved Plans*

<b>TABLE OF CONTENTS</b>		<b>REPUBLIC OF THE PHILIPPINES</b> <b>OFFICE OF THE CITY MUNICIPAL</b> <b>ENGINEERING OFFICIAL</b>
<b>ARCHITECTURAL</b>		<b>DIVISION OF MUNICIPALITY</b> <b>LAND USE &amp; ZONING</b>
A-1	TABLE OF CONTENTS (HEREIN)	<b>LINE &amp; GRADE</b>
A-2	GENERAL NOTES, SPECIFICATIONS, AND SCHEDULES	
A-3	GENERAL NOTES, SPECIFICATIONS, AND SCHEDULES	<b>ARCHITECTURAL</b>
A-4	GENERAL NOTES, SPECIFICATIONS, AND SCHEDULES	
A-5	GENERAL NOTES, SPECIFICATIONS, AND SCHEDULES	<b>STRUCTURAL</b>
A-6	GENERAL NOTES, SPECIFICATIONS, AND SCHEDULES	
A-7	GENERAL NOTES, SPECIFICATIONS, AND SCHEDULES	<b>SANITARY</b>
A-8	GENERAL NOTES, SPECIFICATIONS, AND SCHEDULES	
A-9	GENERAL NOTES, SPECIFICATIONS, AND SCHEDULES	<b>ELECTRICAL</b>
A-10	GENERAL NOTES, SPECIFICATIONS, AND SCHEDULES	
A-11	GENERAL NOTES, SPECIFICATIONS, AND SCHEDULES	<b>MECHANICAL</b>
A-12	GENERAL NOTES, SPECIFICATIONS, AND SCHEDULES	
A-13	GENERAL NOTES, SPECIFICATIONS, AND SCHEDULES	<b>OTHERS</b>
A-14	GENERAL NOTES, SPECIFICATIONS, AND SCHEDULES	



1 PERSPECTIVE  
A-1

<b>REPUBLIC OF THE PHILIPPINES</b> <b>OFFICE OF THE CITY MUNICIPAL</b> <b>ENGINEERING OFFICIAL</b>	<b>DIVISION OF MUNICIPALITY</b> <b>LAND USE &amp; ZONING</b>	<b>PROJECT NO.</b> 080-191C-14-172	<b>PROJECT TITLE</b> ONE STOREY ONE (1) CLASSROOM SCHOOL BUILDING	<b>DATE</b> 14-12-2019	<b>SCALE</b> AS SHOWN
<b>TABLE OF CONTENTS</b>		<b>DEPARTMENT OF EDUCATION</b> DepEd			
<b>ARCHITECTURAL</b>		<b>TABLE OF CONTENTS</b>			
<b>ARCHITECTURAL</b>		<b>5</b>			



**DepEd**  
REPUBLIC OF THE PHILIPPINES  
DEPARTMENT OF EDUCATION

**DepEd**  
REPUBLIC OF THE PHILIPPINES  
DEPARTMENT OF EDUCATION

**DepEd**  
REPUBLIC OF THE PHILIPPINES  
DEPARTMENT OF EDUCATION

**DepEd**  
REPUBLIC OF THE PHILIPPINES  
DEPARTMENT OF EDUCATION

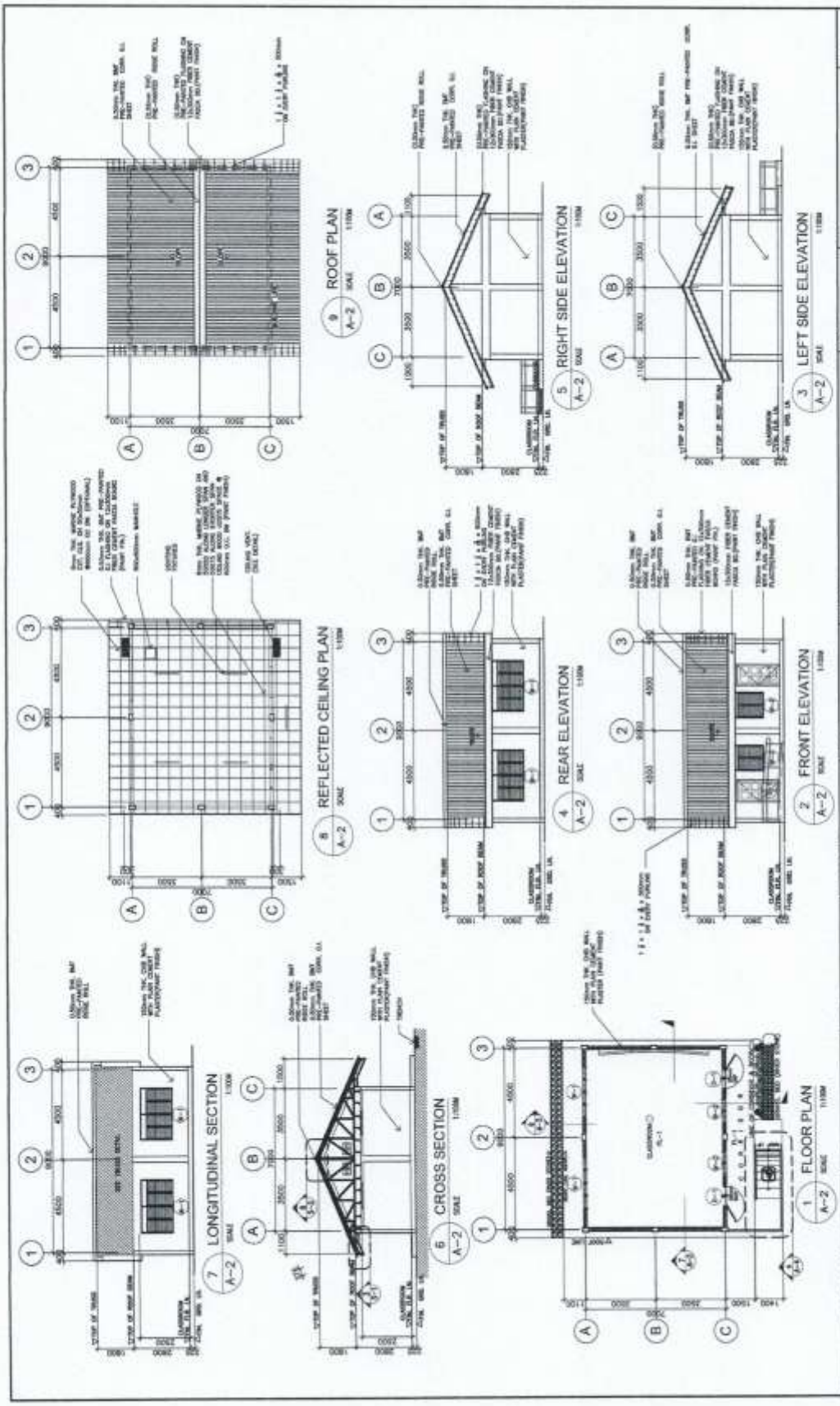
**DepEd**  
REPUBLIC OF THE PHILIPPINES  
DEPARTMENT OF EDUCATION

**DepEd**  
REPUBLIC OF THE PHILIPPINES  
DEPARTMENT OF EDUCATION

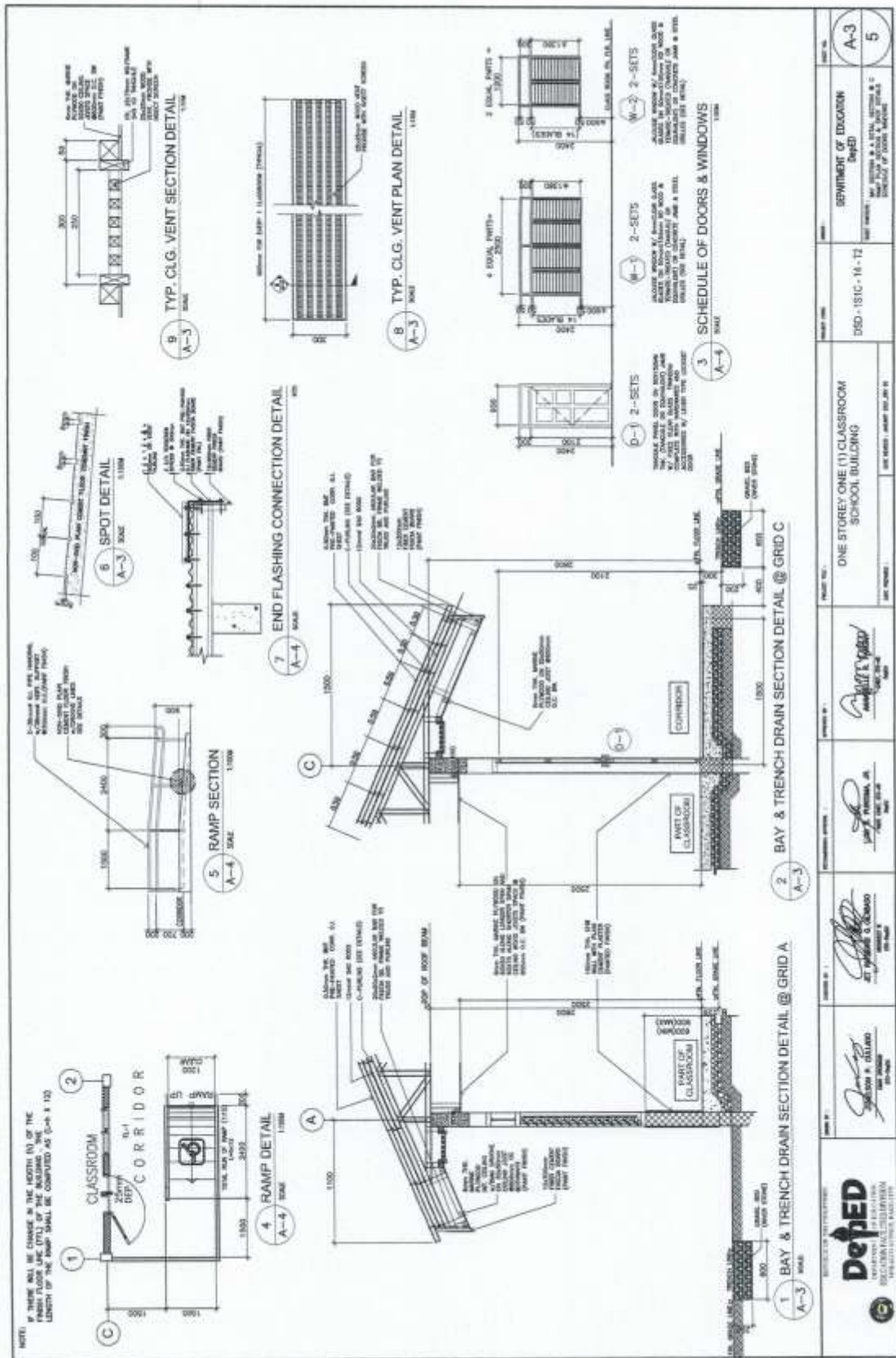
**DepEd**  
REPUBLIC OF THE PHILIPPINES  
DEPARTMENT OF EDUCATION

**DepEd**  
REPUBLIC OF THE PHILIPPINES  
DEPARTMENT OF EDUCATION

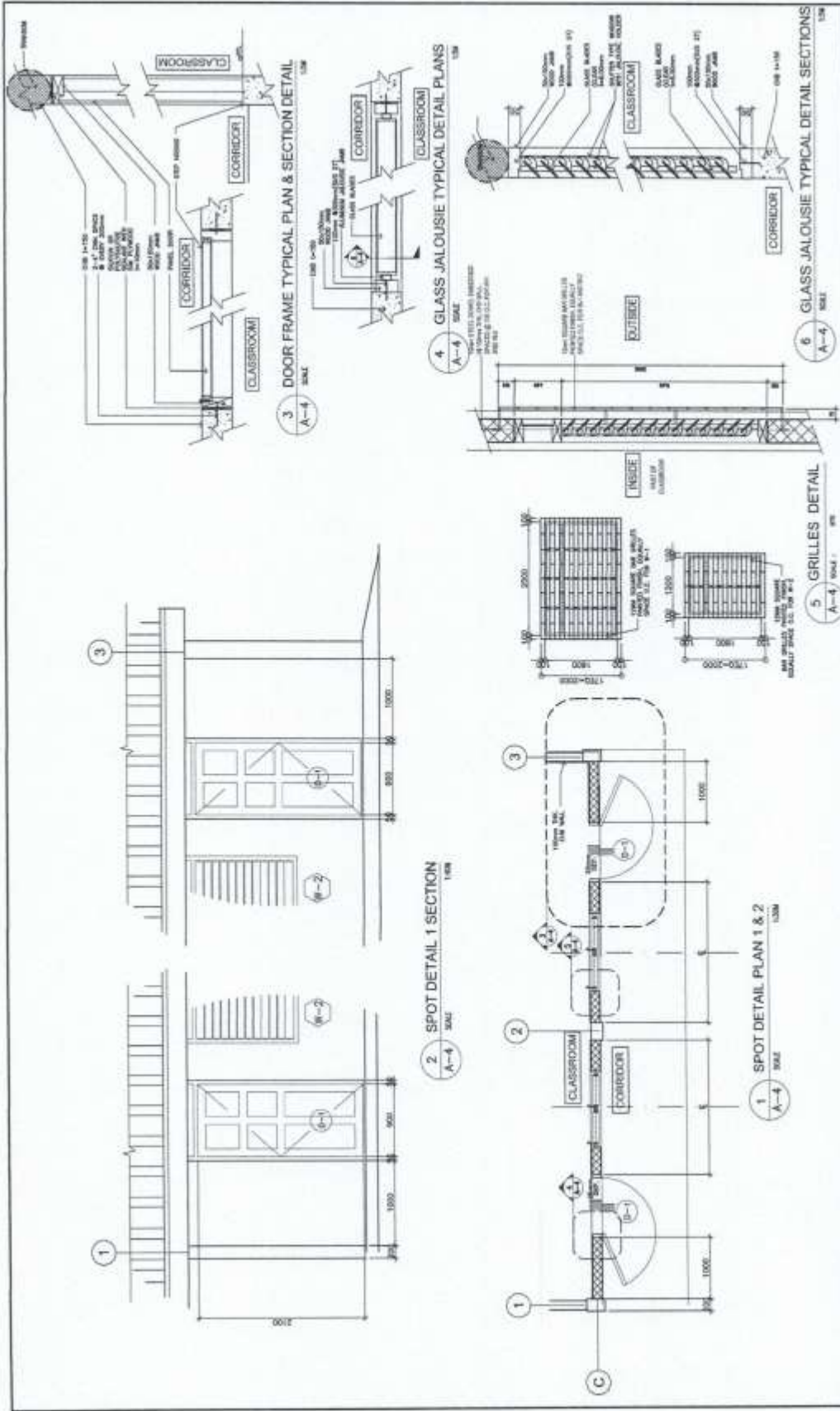
**DepEd**  
REPUBLIC OF THE PHILIPPINES  
DEPARTMENT OF EDUCATION



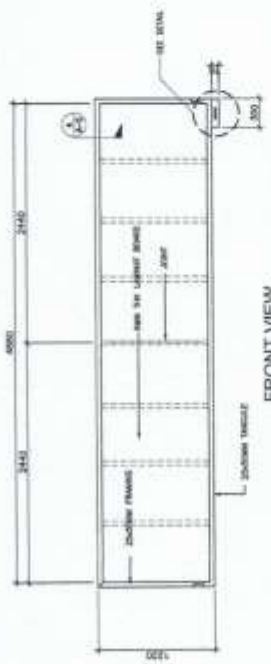
<p>DEPARTMENT OF EDUCATION DICTATORIAL REGULATION BUREAU OFFICE - PASAY</p>	<p>DESIGNED BY: <i>[Signature]</i> ARCHITECT: <i>[Signature]</i> DATE: 10/10/14</p>	<p>PROJECT NO.: <i>[Signature]</i> DATE: 10/10/14</p>	<p>PROJECT NAME: ONE STOREY ONE (1) CLASSROOM SCHOOL BUILDING</p>	<p>PROJECT NO.: DBD-151C-14-72</p>	<p>PROJECT NO.: A-2 5</p>
---	---	---	---	--	-----------------------------------



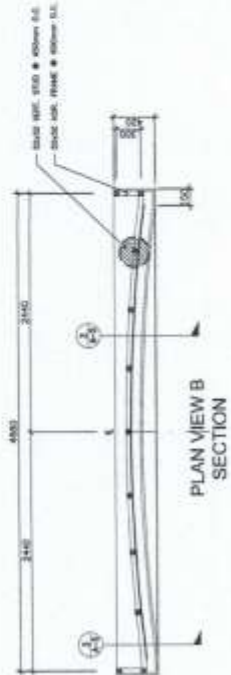
<p><b>DepEd</b></p> <p>DEPARTMENT OF EDUCATION DIVISION OFFICE - DAVAO</p>	<p><i>[Signature]</i></p> <p>ARCHITECT</p>	<p><i>[Signature]</i></p> <p>STRUCTURAL ENGINEER</p>	<p><i>[Signature]</i></p> <p>ELECTRICAL ENGINEER</p>	<p><i>[Signature]</i></p> <p>Mechanical Engineer</p>	<p>DSD - 151C - 16 - T2</p>	<p>SEMINARY OF EDUCATION DepEd</p>	<p>5</p>
--	--	--	--	--	-----------------------------	--	----------



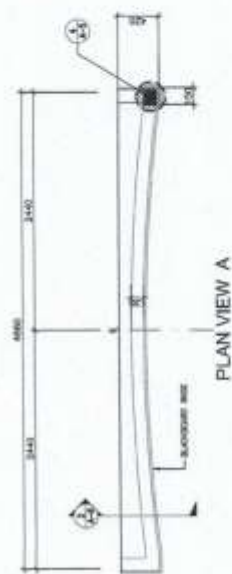
 <b>DepEd</b> DIVISION OFFICE - CALABARZON EDUCATION MANAGEMENT SYSTEMS (EMIS) DIVISION OFFICE	PROJECT NO. 1 PROJECT TITLE ONE STOREY ONE (1) CLASSROOM SCHOOL BUILDING	SHEET NO. 5 TOTAL SHEETS 5
	DESIGNER  DESIGN ENGINEER REGISTERED PROFESSIONAL ENGINEER CIVIL ENGINEER	DRAWN BY  DRAFTER
CHECKED BY  CHECKER	DATE 18-10-14	SHEET NO. 5 TOTAL SHEETS 5
APPROVED BY  APPROVING AUTHORITY	PROJECT NO. 1 PROJECT TITLE ONE STOREY ONE (1) CLASSROOM SCHOOL BUILDING	SHEET NO. 5 TOTAL SHEETS 5



FRONT VIEW

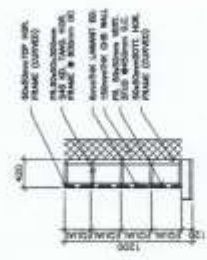


PLAN VIEW B SECTION

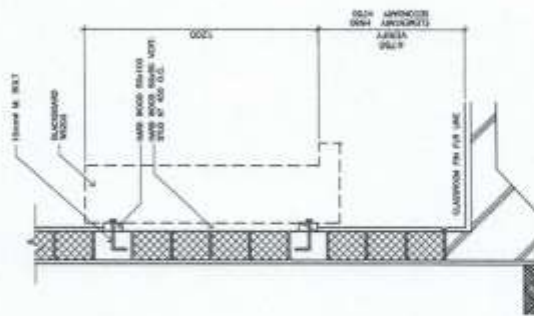


PLAN VIEW A

1 BLACKBOARD DETAIL  
SCALE: 1/8" = 1'-0"



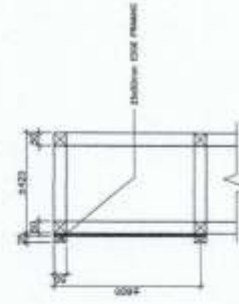
3 SECTION  
SCALE: 1/8" = 1'-0"



2 CONNECTION SECTION DETAIL  
SCALE: 1/8" = 1'-0"



4 CHALK DUST BOX DETAIL  
SCALE: 1/8" = 1'-0"

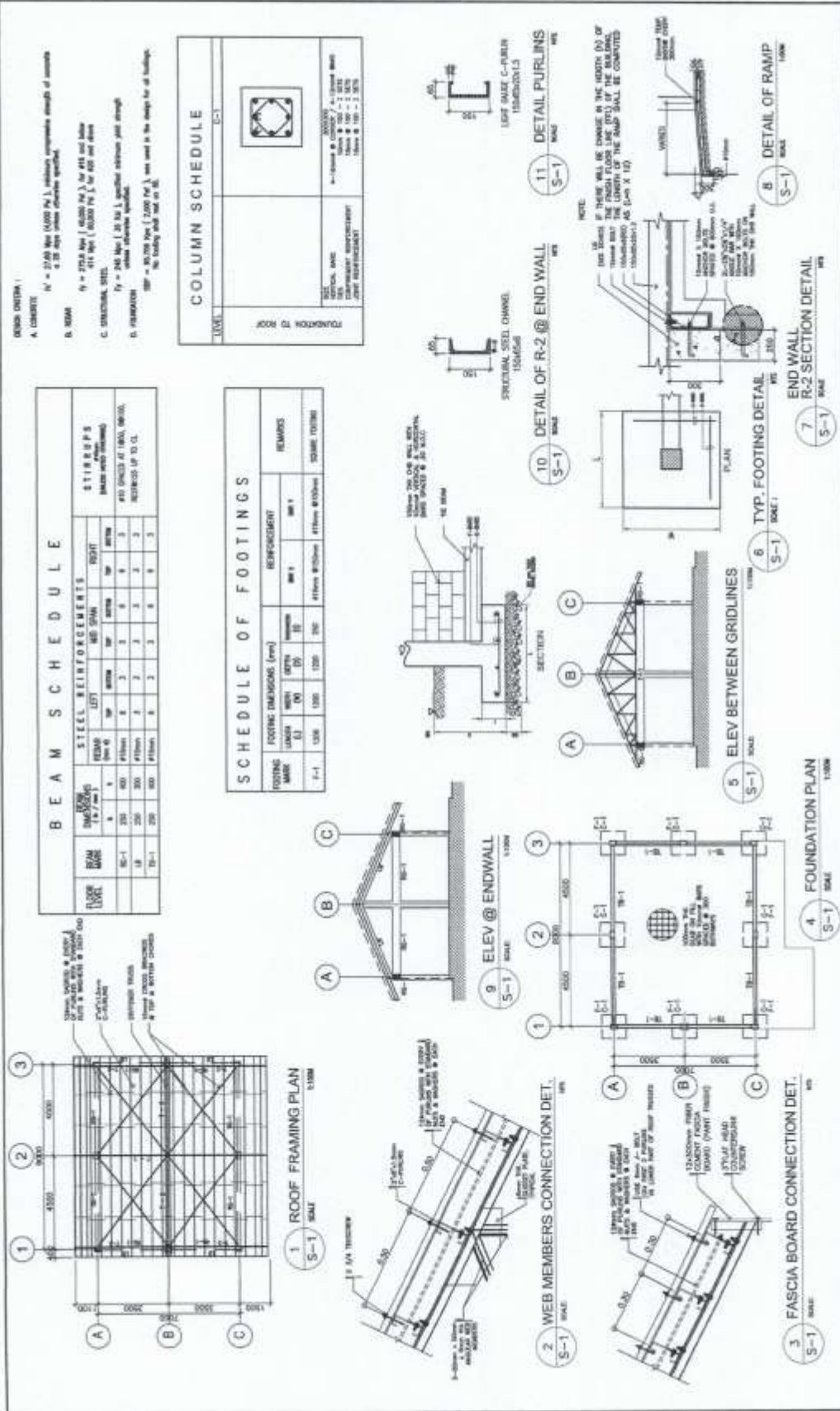


5 SPOT DETAIL SECTION  
EDGE FRAMING  
SCALE: 1/8" = 1'-0"

SPECIFICATION:

- MATERIALS - BLACKBOARD SHEET, WOODS OF DOMESTIC OR IMPORTED WOOD FRAMES - WITH THE LAMINATE BOARD
- FINISHES - WATER-RESISTANT CHALKBOARD SHEET - 1/8" (2.0mm) THICKNESS - 1/4" (6.3mm) THICKNESS
- FRAMES - CHALKBOARD AND CHALKBOARD WITH 1/4" (6.3mm) THICKNESS BOARD WITH 1/4" (6.3mm) THICKNESS BOARD (WOOD) (WOOD) OR BLACKBOARD LITE (WOOD) OR BLACKBOARD LITE

	DRAWN BY:  JACKSON P. OLIVO 1000 W. 10th St. DENVER, CO 80202	CHECKED BY:  JEFF P. THOMAS, PE 1000 W. 10th St. DENVER, CO 80202	PROJECT NO.: ONE STOREY ONE (1) CLASSROOM SCHOOL BUILDING	SHEET NO.: DSD - 151C - 14 - 12	DEPT. NO.: DEPARTMENT OF EDUCATION DeptEd	SHEET NO.: A-5 5
	DATE: 08/14/2013 TIME: 10:00 AM	DATE: 08/14/2013 TIME: 10:00 AM	DATE: 08/14/2013 TIME: 10:00 AM	DATE: 08/14/2013 TIME: 10:00 AM	DATE: 08/14/2013 TIME: 10:00 AM	DATE: 08/14/2013 TIME: 10:00 AM

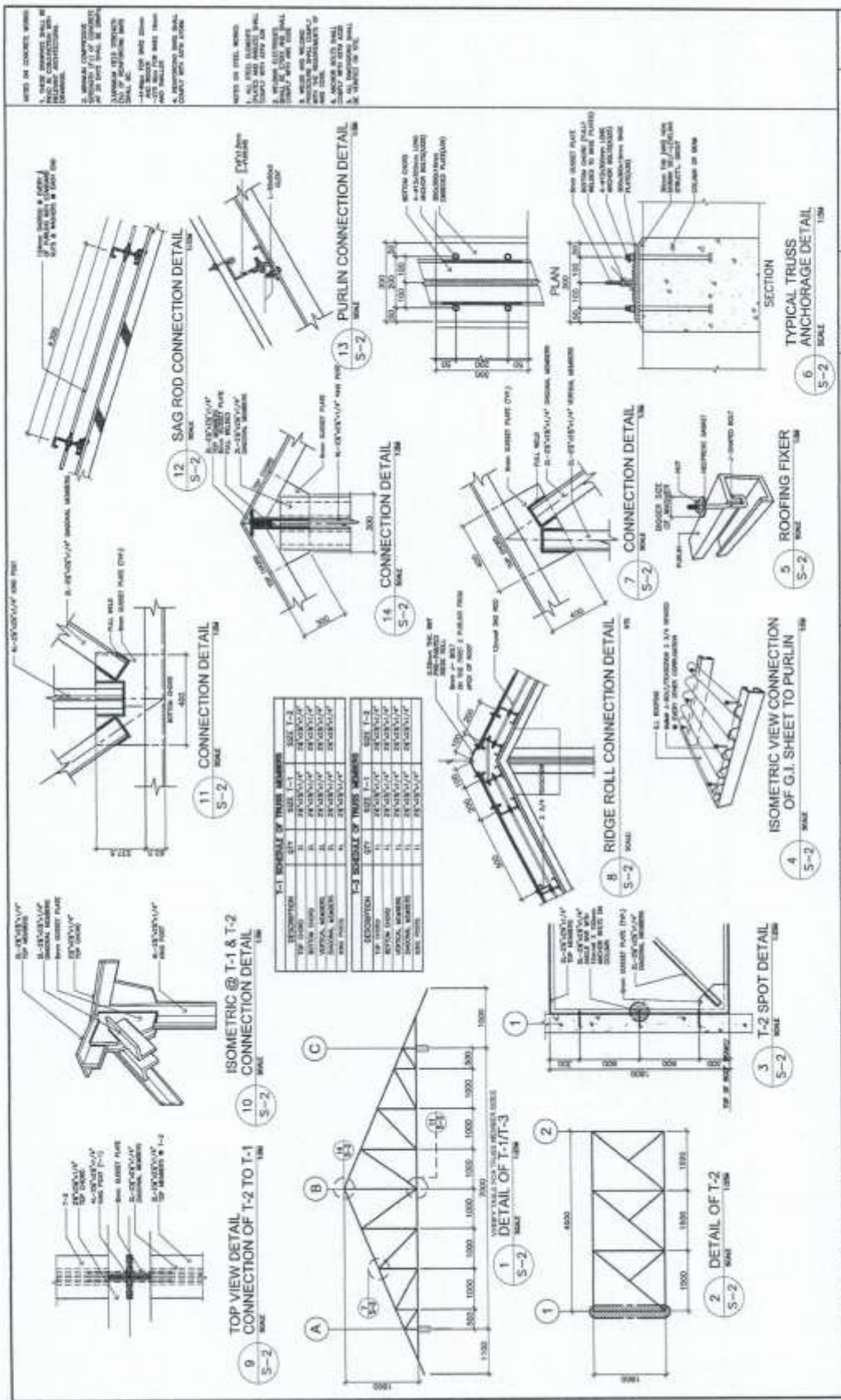


**DESK CHECK:**  
A. CONCRETE: f<sub>c</sub> = 24.8 MPa (3550 PSI), ultimate compressive strength of concrete = 33.8 MPa (4900 PSI) unless otherwise specified.  
B. REBAR: f<sub>y</sub> = 275.8 MPa (40000 PSI), for #10 and below; 414 MPa (60000 PSI), for #11 and above.  
C. STRUCTURAL STEEL: 414 MPa (60000 PSI), for A572 and above; ultimate tensile strength; ultimate yield strength.  
D. DIMENSIONS: 1:24.8 MPa (3550 PSI), used in the design for all loadings; 33.8 MPa (4900 PSI), used in the design for all loadings.

**PROJECT INFO:**  
PROJECT NO.: 05D-151C-14-12  
SHEET NO.: S-1  
DEPARTMENT OF EDUCATION  
ONE STOREY ONE (1) CLASSROOM SCHOOL BUILDING  
DATE: 2014-10-14  
SCALE: 1/8" = 1'-0"

**DESIGNER:** [Signature]  
**CHECKER:** [Signature]  
**APPROVER:** [Signature]

**DEPED**  
DIVISION OFFICE - CALABARZON  
MARICORIN, CALABARZON



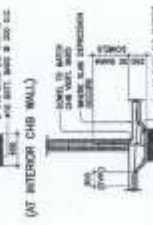
<p><b>DepED</b> DEPARTMENT OF EDUCATION</p>	<p>PROJECT NO. 050-151C-14-12</p>	<p>DATE: 2014-10-14</p>	<p>SCALE: S-2</p>
<p>PROJECT TITLE: ONE STOREY ONE (1) CLASSROOM SCHOOL BUILDING</p>	<p>PROJECT NO. 050-151C-14-12</p>	<p>DATE: 2014-10-14</p>	<p>SCALE: S-2</p>
<p>DESIGNER: JERRY P. PUNYAN, JR.</p>	<p>PROJECT NO. 050-151C-14-12</p>	<p>DATE: 2014-10-14</p>	<p>SCALE: S-2</p>
<p>DESIGNER: JERRY P. PUNYAN, JR.</p>	<p>PROJECT NO. 050-151C-14-12</p>	<p>DATE: 2014-10-14</p>	<p>SCALE: S-2</p>
<p>DESIGNER: JERRY P. PUNYAN, JR.</p>	<p>PROJECT NO. 050-151C-14-12</p>	<p>DATE: 2014-10-14</p>	<p>SCALE: S-2</p>
<p>DESIGNER: JERRY P. PUNYAN, JR.</p>	<p>PROJECT NO. 050-151C-14-12</p>	<p>DATE: 2014-10-14</p>	<p>SCALE: S-2</p>







# GENERAL CONSTRUCTION NOTES



**NOTES ON WELDS**

- USE STEEL ELECTRODES FOR ALL WELDED JOINTS.
- WELDS TO BE MADE BY THE FOLLOWING METHODS:
  - WELDED JOINTS TO BE MADE BY THE FOLLOWING METHODS:
    - WELDED JOINTS TO BE MADE BY THE FOLLOWING METHODS:

**NOTES ON STRUCTURAL STEEL**

- STRUCTURAL STEEL TO BE USED FOR ALL STRUCTURAL MEMBERS.
- STRUCTURAL STEEL TO BE USED FOR ALL STRUCTURAL MEMBERS.
- STRUCTURAL STEEL TO BE USED FOR ALL STRUCTURAL MEMBERS.
- STRUCTURAL STEEL TO BE USED FOR ALL STRUCTURAL MEMBERS.

**NOTES ON EMBEDDED PIPES**

- ALL EMBEDDED PIPES TO BE MADE BY THE FOLLOWING METHODS:
  - ALL EMBEDDED PIPES TO BE MADE BY THE FOLLOWING METHODS:

**NOTES ON CONCRETE HOLLOW BLOCK WALLS**

- ALL CONCRETE HOLLOW BLOCK WALLS TO BE MADE BY THE FOLLOWING METHODS:
  - ALL CONCRETE HOLLOW BLOCK WALLS TO BE MADE BY THE FOLLOWING METHODS:

**NOTES ON CONCRETE HOLLOW BLOCK WALLS**

- ALL CONCRETE HOLLOW BLOCK WALLS TO BE MADE BY THE FOLLOWING METHODS:
  - ALL CONCRETE HOLLOW BLOCK WALLS TO BE MADE BY THE FOLLOWING METHODS:

**TYPICAL SLAB & BEAM CONSTRUCTION JOINT DET.**

**NOTES OF STIRRUPS**

- ALL STIRRUPS SHALL BE MADE BY THE FOLLOWING METHODS:
  - ALL STIRRUPS SHALL BE MADE BY THE FOLLOWING METHODS:



BAR SIZE	GROUP AND 72° HOOKS (ALL SIZES)	GROUP AND 72° HOOKS (ALL SIZES)
12mm	1.00	1.00
14mm	1.00	1.00
16mm	1.00	1.00
18mm	1.00	1.00
20mm	1.00	1.00
22mm	1.00	1.00
25mm	1.00	1.00
28mm	1.00	1.00
32mm	1.00	1.00

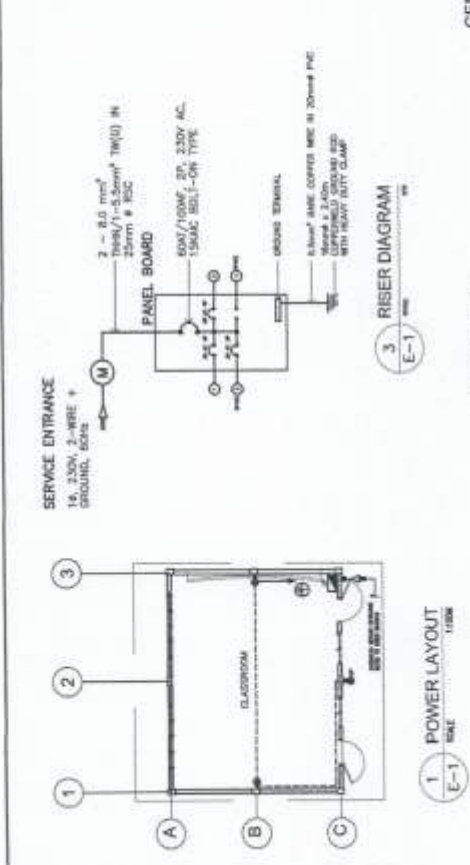
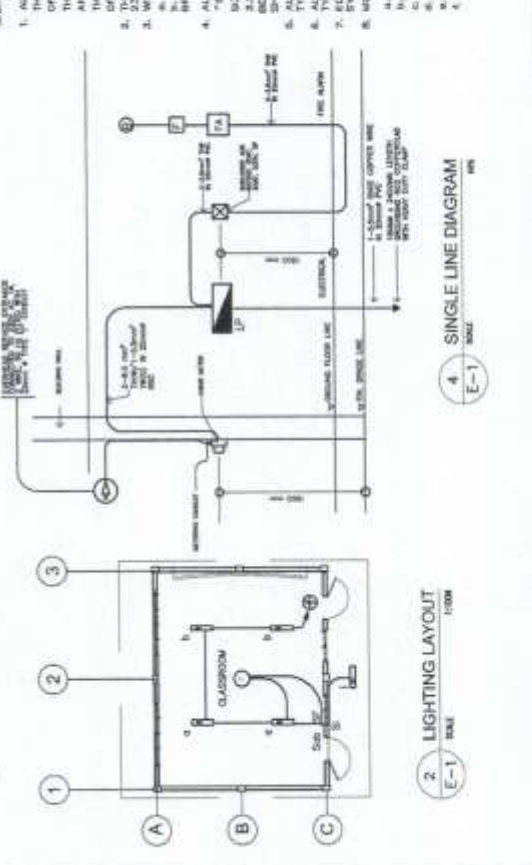
	<b>DepEd</b> DIVISION OFFICE - DAVAO DEL NORTE EDUCATION OFFICE - DAVAO DEL NORTE	PROJECT NO.: ONE STOREY ONE (1) CLASSROOM SCHOOL BUILDING	SHEET NO.: SS-3 3
DRAWN BY:		CHECKED BY:	DATE: 15-10-14
PROJECT TITLE:		SHEET NO.:	SHEET NO.:

DCT. NO.	DESCRIPTION	VA LOAD	TYPE, FLUSH			WIRE & CONDUIT SIZE
			AMPS	VOLT	BREAKER	
1	100W BULB - 1 x 100W	475	2.0	230	1 30	2 - 3.5 mm <sup>2</sup> THHN @ 1-3.0mm <sup>2</sup> TW(0) IN 20mm # PVC
2	100W BULB - 1 x 100W	475	2.0	230	1 30	2 - 3.5 mm <sup>2</sup> THHN @ 1-3.0mm <sup>2</sup> TW(0) IN 20mm # PVC
3	SWITCH	1000	4.5	230	1 30	2 - 3.5 mm <sup>2</sup> THHN @ 1-3.0mm <sup>2</sup> TW(0) IN 20mm # PVC
TOTAL						2850 VA
RECEPT. : 2 - 80W/100W, 2P, 230V, 150WAC BOLT-ON TYPE PROTECTION : 3 x 30A, 2P, BOLT-ON IN NEAR 1 ENCLOSURE						

**LOAD SCHEDULE**

**GENERAL NOTES:**

- ALL ELECTRICAL WORKS SHALL COMPLY IN ACCORDANCE WITH THESE PLANS AND SPECIFICATIONS, THE APPLICABLE PROVISIONS OF THE LATEST EDITION OF THE PHILIPPINE ELECTRICAL CODE (PEC), THE RULES AND REGULATIONS OF THE LOCAL ENGINEERING AUTHORITY AND THE REQUIREMENTS SHALL BE UNDER IMMEDIATE SUPERVISION OF A FULLY INCORPORATED ELECTRICAL ENGINEER.
- THE ELECTRICAL SERVICE POWER IS 1-PHASE, 3-WIRE + GROUND, 230V AC, 60 Hz.
- WIRING METHOD SHALL BE AS FOLLOWS:
  - INTERIOR METALLIC CONDUIT
  - EXTERIOR METALLIC CONDUIT
  - INDUSTRIAL WIRE
  - BRANCH CTS., & AUXILIARY - POLYVINYL CHLORIDE CONDUIT
  - TRUNKING
  - TRUNKING
- ALL WIRES SHALL BE COPPER AND THERMOPLASTIC INSULATED TYPE "THHN" UNLESS OTHERWISE NOTED IN THE PLAN. THE MINIMUM SIZE OF WIRE FOR POWER AND LIGHTING CIRCUIT HOOKUP SHALL BE 1.5mm<sup>2</sup> AND INSULATED FOR 600 VOLTS. SMALLEST RACEWAY SHALL BE 15mm<sup>2</sup> TRADE/NOMINAL SIZE. UNLESS ALL ELECTRICAL WIRES SHALL BE COLOR CODED.
  - BLACK - LINE
  - RED - LINE
  - WHITE - NEUTRAL
  - GREEN - GROUND
- TYPE OF MATERIALS TO BE USED SHALL BE BRAND NEW AND APPROVED TYPE FOR THE PARTICULAR LOCATION AND PURPOSE OF USAGE.
- EDUCATION GRADING SYSTEM SHALL BE PROVIDED IN ACCORDANCE WITH THE FOLLOWING:
  - 1.20 M ABOVE FINISH FLOOR
  - 0.30 M ABOVE FINISH FLOOR
  - 1.20 M ABOVE FINISH FLOOR
  - 1.20 M ABOVE FINISH FLOOR
  - 0.30 M ABOVE FINISH FLOOR
  - 0.30 M ABOVE FINISH FLOOR
- REGULATING HEIGHT OF WIRING DEVICES SHALL BE AS FOLLOWS:
  - LIGHT SWITCH - 1.20 M ABOVE FINISH FLOOR
  - CONDUIT OUTLET - 0.30 M ABOVE FINISH FLOOR
  - FIRE ALARM STATION OUTLET - 1.20 M ABOVE FINISH FLOOR
  - PUSH BUTTON OUTLET - 1.20 M ABOVE FINISH FLOOR
  - FIRE ALARM & VIBRATING BELL - 0.30 M BELOW CEILING LINE



**DEPED**  
 DIVISION OFFICE - CALABANG  
 PANGASINAN

**PROJECT NO. :** DSD - SIC - 14 - 17

**PROJECT NAME :** ONE STOREY ONE (1) CLASSROOM SCHOOL BUILDING

**DATE :** 08/08/2018

**DESIGNED BY :** [Signature]

**CHECKED BY :** [Signature]

**DATE :** 08/08/2018

**PROJECT NO. :** E-1

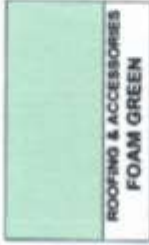
**PROJECT NAME :** DEPARTMENT OF EDUCATION

**PROJECT NO. :** 1

# STANDARD COLOR SCHEME



DOOR  
PALMYRA GREEN



ROOFING & ACCESSORIES  
FOAM GREEN



COLUMNS (WOOD)  
QUICK DRY ENAMEL  
YELLOW RAIN



COLUMNS (CONCRETE)  
LATEX COLUMNS BEIGE  
YELLOW RAIN



EXT. WALL (WOOD)  
QUICK DRY ENAMEL  
CRISP ECRU



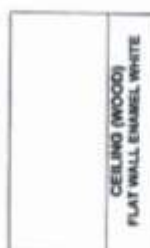
EXT. WALL (CONCRETE)  
LATEX EXT. BEIGE  
CRISP ECRU



INTERIOR WALL (WOOD)  
QUICK DRY ENAMEL  
BRIGHT WONDER



INTERIOR WALL (CONCRETE)  
LATEX INTERIOR BEIGE  
BRIGHT WONDER



CEILING (WOOD)  
FLAT WALL ENAMEL WHITE



CEILING (CONCRETE)  
FLAT WHITE



REPUBLIC OF THE PHILIPPINES  
**DepED**  
DEPARTMENT OF EDUCATION  
EDUCATION FACILITIES DIVISION

PREPARED BY:

*[Signature]*  
ARCH. JET RAYMOND Q. ALABAGO  
Planning and Design Unit  
EFD-AS

CHECKED AND RECOMMENDED BY:

*[Signature]*  
ENGR. LUIS R. PURISMA, JR.  
Assistant Chief  
EFD-AS

APPROVED BY:

*[Signature]*  
ENGR. ANGELICA F. PANGAN  
Chief, EFD-AS

# **Section VIII. Bill of Quantities**

## **Notes on the Bill of Quantities**

### **Objectives**

The objectives of the Bill of Quantities are:

- a. to provide sufficient information on the quantities of Works to be performed to enable Bids to be prepared efficiently and accurately; and
- b. when a Contract has been entered into, to provide a priced Bill of Quantities for use in the periodic valuation of Works executed.

In order to attain these objectives, Works should be itemized in the Bill of Quantities in sufficient detail to distinguish between the different classes of Works, or between Works of the same nature carried out in different locations or in other circumstances which may give rise to different considerations of cost. Consistent with these requirements, the layout and content of the Bill of Quantities should be as simple and brief as possible.

### **Daywork Schedule**

A Daywork Schedule should be included only if the probability of unforeseen work, outside the items included in the Bill of Quantities, is high. To facilitate checking by the Entity of the realism of rates quoted by the Bidders, the Daywork Schedule should normally comprise the following:

- a. A list of the various classes of labor, materials, and Constructional Plant for which basic daywork rates or prices are to be inserted by the Bidder, together with a statement of the conditions under which the Contractor will be paid for work executed on a daywork basis.
- b. Nominal quantities for each item of Daywork, to be priced by each Bidder at Daywork rates as Bid. The rate to be entered by the Bidder against each basic Daywork item should include the Contractor's profit, overheads, supervision, and other charges.

### **Provisional Sums**

A general provision for physical contingencies (quantity overruns) may be made by including a provisional sum in the Summary Bill of Quantities. Similarly, a contingency allowance for possible price increases should be provided as a provisional sum in the Summary Bill of Quantities. The inclusion of such provisional sums often facilitates budgetary approval by

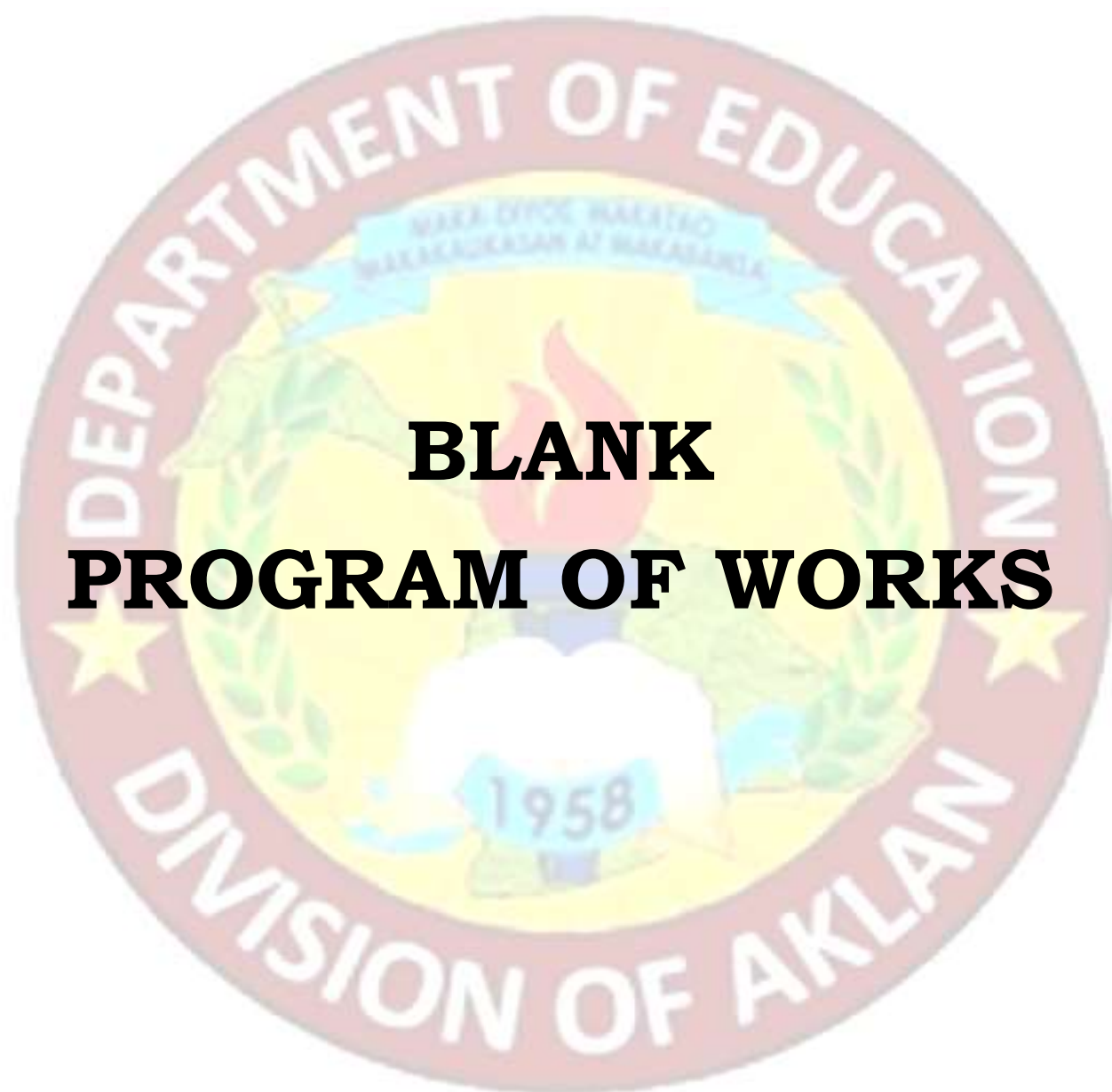
avoiding the need to request periodic supplementary approvals as the future need arises. Where such provisional sums or contingency allowances are used, the SCC should state the manner in which they will be used, and under whose authority (usually the Procuring Entity's Representative's).

The estimated cost of specialized work to be carried out, or of special goods to be supplied, by other contractors should be indicated in the relevant part of the Bill of Quantities as a particular provisional sum with an appropriate brief description. A separate procurement procedure is normally carried out by the Procuring Entity to select such specialized contractors. To provide an element of competition among the Bidders in respect of any facilities, amenities, attendance, etc., to be provided by the successful Bidder as prime Contractor for the use and convenience of the specialist contractors, each related provisional sum should be followed by an item in the Bill of Quantities inviting the Bidder to quote a sum for such amenities, facilities, attendance, etc.

### **Signature Box**

A signature box shall be added at the bottom of each page of the Bill of Quantities where the authorized representative of the Bidder shall affix his signature. Failure of the authorized representative to sign each and every page of the Bill of Quantities shall be a cause for rejection of his bid.

These Notes for Preparing a Bill of Quantities are intended only as information for the Procuring Entity or the person drafting the Bidding Documents. They should not be included in the final documents.



**BLANK  
PROGRAM OF WORKS**





**LOT 1**  
**BEL-IS ES**

# CONTRACTOR'S LOGO

School:	BEL-IS ELEMENTARY SCHOOL	Date:	October 12, 2021	
School I.D :	114702	Budget Allocation:	PHP 829,930.78	
Region :	VI	Engineering and Administrative Overhead:		
Division :	DIVISION OF AKLAN	Approved Budget for the Contract:		
Project Title :	: PROPOSED REPAIR AND REHABILITATION OF 1 SCHOOL BUILDING (2 CLASSROOMS)	Completion Period:	90 calendar days	
		Minimum Required Manpower:		
		General Foreman	Welder	Carpenter
		Helper	Mason	Painter
Plan :		Minimum Required Equipment:		
Location	BURUANGA, AKLAN	Hand Tools	Welding Machine	
		One-Bagger Mixer	Bar Cutter	

ITEM NO.	Item Description	% of Total	Unit	Quantity	Total Cost	Remarks
	I. DIRECT COST					
	GENERAL REQUIREMENTS		lot	1.00		
	BLDG. 1 - FFCCII SCHOOL BUILDING - 2CL, 7mts. X 7mts.					
8.000	Roofing Works		lot	1.00		
7.000	Steel Works		lot	1.00		
9.000	Carpentry Works		lot	1.00		
10.000	Electrical Works		lot	1.00		
6.000	Doors and Windows		lot	1.00		
13.000	Painting Works		sq m	446.00		
	Ramp on Fill (with Ramp Railing)		lot	1.00		
	Sub-Total					
	II. INDIRECT COST - % of (I)					
	Overhead Expenses ( _ %)					
	Contingencies ( _ %)					
	Miscellaneous ( _ %)					
	Contractor's Profit ( _ %)					
	Sub-Total					
	III. TAX 8% of (I+II)					
	Sub-Total					
	IV. TOTAL CONSTRUCTION COST (I + II + III)					

Prepared by:

\_\_\_\_\_  
CONTRACTOR

# CONTRACTOR'S ESTIMATE

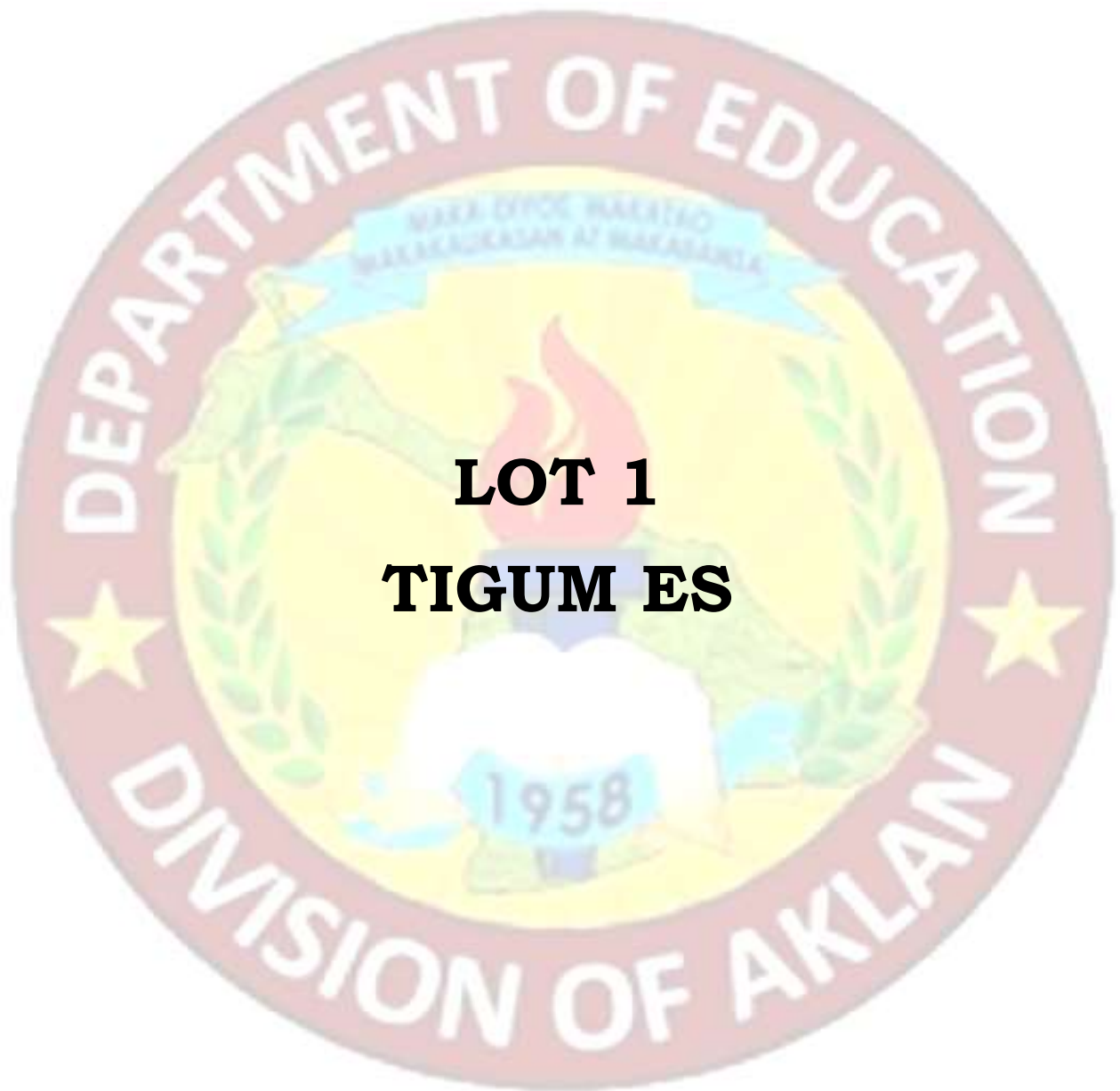
PROJECT : PROPOSED REPAIR AND REHABILITATION OF 1 SCHOOL BUILDING (2 CLASSROOMS)  
 SCHOOL : BEL-IS ELEMENTARY SCHOOL  
 LOCATION BURLIANGA, AKLAN  
 OWNER : DEPARTMENT OF EDUCATION

ITEM NO.	DESCRIPTION	UNIT	QTY	UNIT COST		TOTAL COST		GRAND TOTAL
				MATERIAL	LABOR	MATERIAL	LABOR	
<b>GENERAL REQUIREMENTS</b>								
	Mobilization/Temporary Structures, Utilities and Services/Demobilization	lot	1.00					
	Safety and Health	lot	1.00					
	Project Billboard	lot	1.00					
	Fire Safety Inspection Certificate (FSIC)	lot	1.00					
	Other Permit Fee	lot	1.00					
	Hauling cost	lot	1.00					
	<b>Sub-total</b>							
<b>BLDG. 1 - FPCCII SCHOOL BUILDING - 2CL., 7mts. X 7mts.</b>								
<b>8.0000 Roofing Works</b>								
8.0100	Removal of Roofing Sheets	sq.m	150.00					
8.0200	Removal of Ridge Roll	pc	8.00					
8.0300	Removal of Flashing	pc	9.00					
8.0500	Removal of Fascia Board	pc	22.00					
8.0600	G.I Long-Span Roofing, Corrugated, Pre-Painted, 1220mm x 0.5mm BMT	lm	190.00					
8.0800	G.I Flashing, Preformed, Pre-Painted, 0.610m x 2.440m x 0.5mm BMT	pc	8.00					
8.0700	G.I Ridge Roll, Preformed, Pre-Painted, 0.610m x 2.440m x 0.5mm BMT	pc	7.00					
9.1430	Fascia Board, Fiber Cement 12" x 8"	pc	12.00					
	L 20 x 20 x 2mm	kg	96.00					
	L 38 x 38 x 4.5mm	kg	61.00					
	3" Flat head Countersunk screw	pc	300.00					
	J-Bolt (6mm dia.)	pc	954.00					
8.1000	Telescrew 2-3/4"	pc	1,954.00					
8.1300	Roof Sealant	L	4.00					
	<b>Sub-total</b>							
<b>7.0000 Steel Works</b>								
7.0500	L 50 x 50 x 6mm	kg	717.00					
7.0200	2" x 4" x 1.5mm C - purlins	kg	541.00					
7.1010	L 50 x 50 x 2mm	kg	29.00					
7.1810	Machine Bolts ( 10 mm dia. )	pc	240.00					
7.2200	12mmØ Sag Rods with Standard Nuts and Washers	pc	96.00					
7.1900	Plain Round Bar 15mmØ x 6m	pc	15.00					
7.2100	Turn Buckle 18 mmØ	pc	16.00					
7.1510	Anchor Bolt with Nuts and Washer, 12mmØ x 50mm x 300mm	pc	40.00					
7.1700	Anchor Bolt with Nuts and Washer, 10mmØ x 50mm x 300mm	pc	6.00					
7.1200	Steel Plate 1.20m x 2.40m x 6mm thk	pc	1.00					
	Steel Plate 1.20m x 2.40m x 10mm thk	pc	0.50					
7.3600	Welding Rod	kg	67.00					
13.1100	Primer, Zinc Chromate	gal	4.00					
	<b>Sub-total</b>							
<b>9.0000 Carpentry Works</b>								
<b>Interior ceiling</b>								
9.0100	Removal of Ceiling	sq.m	98.00					
9.0500	Plywood, Marine 1/4" x 4' x 8'	pc	35.00					
	50 mm x 50 mm Ceiling Joist	bd.ft	256.00					
	50 mm x 75 mm Ceiling Joist	bd.ft	366.00					
9.1700	Rough Lumber, Sun Dried, Tangule	bd.ft	624.00					
9.2100	Finishing Nails	kg	3.00					
	CWN, Assorted	kg	12.00					
9.2200	Concrete Nails	kg	3.00					
	Wood Preservative, Brown	L	4.00					
<b>Exterior ceiling</b>								
9.0100	Removal of Ceiling	sq.m	40.00					
9.0500	Plywood, Marine 1/4" x 4' x 8'	pc	14.00					
	50 mm x 50 mm Ceiling Joist	bd.ft	164.00					
	50 mm x 75 mm Ceiling Joist	bd.ft	102.00					
9.1700	Rough Lumber, Sun Dried, Tangule	bd.ft	266.00					
9.2100	Finishing Nails	kg	1.00					
	CWN, Assorted	kg	5.00					
9.2200	Concrete Nails	kg	1.00					
	Wood Preservative, Brown	L	2.00					
	25mm x 25mm x 300mm Wood slate @25mm clear spacing ceiling ventilation (provide stainless steel wire mesh inside)	pc	6.00					
	<b>Partition Wall</b>		14.00					
9.1000	Metal Double Furring Channel (19mm x 50mm x 2m x 0.5mm thk)	pc	7.00					
9.1100	Wall Angle 1" x 1" x 10'	pc	4.00					
9.2200	Concrete Nails	kg	1.00					
8.1100	Blind Rivets	pc	140.00					
9.0900	Fiber Cement Ceiling Board (4.5mm thk)	pc	10.00					
<b>Backboards</b>								
9.1800	S4S Lumber, Kiln Dried, Tangule	sq.m	11.52					
9.2000	Lewank, 1/4" thk	pc	4.00					
9.2100	Finishing Nails	kg	1.00					
4.0400	CWN, Assorted	kg	2.00					
9.2200	Concrete Nails	kg	1.00					
	<b>Sub-total</b>							

ITEM NO.	DESCRIPTION	UNIT	QTY	UNIT COST		TOTAL COST		GRAND TOTAL
				MATERIAL	LABOR	MATERIAL	LABOR	
10.0000	<b>Electrical Works</b>							
	<b>Roughing-In</b>							
10.0100	Electrical Conduit uPVC, 15mmØ	pc	24.00					
10.0460	RSC 20mmØ	pc	1.00					
10.0800	Entrance Cap 20mm dia	pc	1.00					
10.1200	Junction Box, 4" x 4" G.I.	pc	8.00					
10.1300	Utility Box, 2" x 4" G.I.	pc	4.00					
	<b>Wires &amp; Fixtures</b>							
10.1800	3.5 mm² THHN Wire, Stranded	m	316.00					
10.2700	Duplex Convenience Outlet, Grounding Type	set	4.00					
10.3200	3 Single Pole Wall Switches in One Switch Plate	set	2.00					
10.3610	FL 1 x 40W Industrial Type	set	12.00					
10.3700	Panel Box, Flush Type, 4 Branches	set	1.00					
10.4300	Circuit Breaker, 40A 2P	set	1.00					
10.4100	Circuit Breaker, 20A 2P	set	3.00					
10.5500	Electrical Tape	pc	4.00					
10.5400	Wall Fan, 80W, 230V, 60Hz	set	4.00					
	<b>Sub-total</b>							
6.0000	<b>Doors and Windows</b>							
6.0100	Removal of Door with Jamb	set	2.00					
6.0200	Removal of Window with Jamb	sq.m	34.00					
6.0200	Removal of Window with Jamb	sq.m	6.00					
6.0320	D-1, Panel Door 0.90m x 2.10m on 150mm Wooden Jamb complete with Accessories (lever type door knob)	set	2.00					
	D-1, Flush Door 0.70m x 2.10m on 100mm Concrete Jamb complete with Accessories	set	3.00					
6.1009	Jalousie Window with Clear Glass Blades on Jalousie Type Silver Colored Frame with Grilles with Concrete Jamb Divider	set	20.00					
	<b>Sub-total</b>							
13.0000	<b>Painting Works</b>							
	<b>Concrete surfaces</b>	sq.m	220.00					
13.0100	Neutralizer	gal	3.00					
13.0200	Latex, Flat	gal	9.00					
13.0400	Latex, Semi Gloss	gal	9.00					
13.0500	Acn Color	qt	3.00					
	<b>Interior Ceiling</b>	sq.m	98.00					
13.0600	Enamel, Flatwall	gal	5.00					
13.0800	Enamel, Semi Gloss	gal	10.00					
13.0900	Paint Thinner	L	4.00					
	<b>Exterior Ceiling</b>	sq.m	40.00					
13.0600	Enamel, Flatwall	gal	2.00					
13.0800	Enamel, Semi Gloss	gal	4.00					
13.0900	Paint Thinner	L	2.00					
	<b>Doors and Windows</b>	sq.m	86.00					
13.0600	Enamel, Flatwall	gal	5.00					
13.0700	Glazing Putty	gal	5.00					
13.0800	Enamel, Semi Gloss	gal	9.00					
13.0900	Paint Thinner	L	4.00					
	<b>Sub-total</b>							
	<b>Ramp on Fill (with Ramp Railing)</b>	cu.m	0.54					
2.0200	Portland Cement	bag	5.00					
2.0400	Crushed Gravel 1"	cu.m	0.75					
2.0500	Washed Sand	cu.m	0.50					
5.0400	10mm x 8m RSS	kg	23.28					
3.1200	G.I. Tie Wire	kg	1.00					
7.2610	G.I. Pipe 1-1/2"Ø Sch. 40	pc	8.00					
7.3600	Welding Rod	kg	3.00					
	<b>Sub-total</b>							
	<b>Direct Cost</b>							
	<b>Indirect Cost (1% of Direct Cost)</b>							
	<b>Tax (5% of I &amp; II)</b>							
	<b>Total Construction Cost (I + II + III)</b>							

Prepared

\_\_\_\_\_  
Contractor



**LOT 1**  
**TIGUM ES**

# CONTRACTOR'S LOGO

School:	TIGUM ELEMENTARY SCHOOL	Date:	October 12, 2021			
School I.D :	114712	Budget Allocation:	PHP 1,291,274.33			
Region :	VI	Engineering and Administrative Overhead:	PHP 0.00			
Division :	DIVISION OF AKLAN	Approved Budget for the Contract:	PHP 0.00			
Project Title :	: PROPOSED REPAIR AND REHABILITATION OF 1 SCHOOL BUILDING (3 CLASSROOMS)		Completion Period:	90 calendar days		
		Minimum Required Manpower:				
		General Foreman	Welder	Carpenter		
		Helper	Mason	Painter		
Plan :			Minimum Required Equipment:			
Location	BURUANGA, AKLAN	Hand Tools		Welding Machine		
		One-Bagger Mixer		Bar Cutter		
ITEM NO.	Item Description	% of Total	Unit	Quantity	Total Cost	Remarks
I. DIRECT COST						
GENERAL REQUIREMENTS						
			lot	1.00		
BLDG. 1 - BLSB TYPE II SCHOOL BUILDING - 3CL , 7mts. X 8mts.						
8.000	Roofing Works		lot	1.00		
7.000	Steel Works		lot	1.00		
9.000	Carpentry Works		lot	1.00		
10.000	Electrical Works		lot	1.00		
6.000	Doors and Windows		lot	1.00		
13.000	Painting Works		sq m	710.00		
	Ramp on Fill (with Ramp Railing)		lot	1.00		
Sub-Total						
II. INDIRECT COST ___ % of (i)						
Overhead Expenses ( ___ %)						
Contingencies ( ___ %)						
Miscellaneous ( ___ %)						
Contractor's Profit ( ___ %)						
Sub-Total						
III. TAX 5% of (II)						
Sub-Total						
IV. TOTAL CONSTRUCTION COST (i + ii + iii)						

Prepared by:

\_\_\_\_\_  
CONTRACTOR

# CONTRACTOR'S ESTIMATE

PROJECT : PROPOSED REPAIR AND REHABILITATION OF 1 SCHOOL BUILDING (3 CLASSROOMS)  
 SCHOOL : TIGUM ELEMENTARY SCHOOL  
 LOCATION : BURUANGA, AKLAN  
 OWNER : DEPARTMENT OF EDUCATION

ITEM NO.	DESCRIPTION	UNIT	QTY	UNIT COST		TOTAL COST		GRAND TOTAL
				MATERIAL	LABOR	MATERIAL	LABOR	
<b>GENERAL REQUIREMENTS</b>								
	Mobilization/Temporary Structures, Utilities and Services/Demobilization	lot	1.00					
	Safety and Health	lot	1.00					
	Project Billboard	lot	1.00					
	Fire Safety Inspection Certificate (FSIC)	lot	1.00					
	Other Permit Fee	lot	1.00					
	Hauling cost	lot	1.00					
	<b>Sub-total</b>							
<b>BLDG. 1 - BLSS TYPE II SCHOOL BUILDING - 3CL, 7mts. X 8mts.</b>								
8.0000	<b>Roofing Works</b>							
8.0100	Removal of Roofing Sheets	sq m	237.00					
8.0200	Removal of Ridge Roll	pc	8.00					
8.0300	Removal of Flashing	pc	9.00					
8.0500	Removal of Fascia Board	pc	22.00					
8.0600	G.I. Long-Span Roofing, Corrugated, Pre-Painted, 1220mm x 0.5mm BMT	lm	300.00					
8.0800	G.I. Flashing, Preformed, Pre-Painted, 0.610m x 2.440m x 0.5mm BMT	pc	8.00					
8.0700	G.I. Ridge Roll, Preformed, Pre-Painted, 0.610m x 2.440m x 0.5mm BMT	pc	9.00					
9.1430	Fascia Board, Fiber Cement 12" x 8"	pc	27.00					
	L 20 x 20 x 2mm	kg	144.00					
	L 38 x 38 x 4.5mm	kg	92.00					
	3" Flat head Countersunk screw	pc	670.00					
	J-Bolt (8mm dia.)	pc	1,431.00					
8.1000	Teckacrew 2-3/4"	pc	2,495.00					
8.1300	Roof Sealant	L	6.00					
8.1100	Blind Rivets	pc	170.00					
	<b>Sub-total</b>							
7.0000	<b>Steel Works</b>							
7.0900	L 50 x 50 x 6mm	kg	1,004.00					
7.0200	2" x 4" x 1.5mm C - purlins	kg	1,256.00					
7.1010	L 50 x 50 x 2mm	kg	29.00					
7.1810	Machine Bolts (.10 mm dia.)	pc	360.00					
7.2200	12mmØ Sag Rods with Standard Nuts and Washers	pc	144.00					
7.1900	Plain Round Bar 16mmØ x 6m	pc	23.00					
7.2100	Turn Buckle 16 mmØ	pc	24.00					
7.1510	Anchor Bolt with Nuts and Washer, 12mmØ x 50mm x 300mm	pc	60.00					
7.1700	Anchor Bolt with Nuts and Washer, 10mmØ x 50mm x 300mm	pc	9.00					
7.1200	Steel Plate 1.20m x 2.40m x 6mm thk	pc	2.00					
	Steel Plate 1.20m x 2.40m x 10mm thk	pc	0.75					
7.3600	Welding Rod	kg	101.00					
13.1100	Primer, Zinc Chromate	gal	6.00					
	<b>Sub-total</b>							
9.0000	<b>Carpentry Works</b>							
<b>Interior ceiling</b>								
9.0100	Removal of Ceiling	sq m	168.00					
9.0500	Plywood, Marine 1/4" x 4' x 8'	pc	59.00					
	50 mm x 50 mm Ceiling Joist	bd ft	315.00					
	50 mm x 75 mm Ceiling Joist	bd ft	474.00					
9.1700	Rough Lumber, Sun Dried, Tangule	bd ft	789.00					
9.2100	Finishing Nails	kg	3.00					
	CWN, Assorted	kg	15.00					
9.2200	Concrete Nails	kg	3.00					
	Wood Preservative, Brown	L	6.00					
<b>Exterior ceiling</b>								
9.0100	Removal of Ceiling	sq m	84.00					
9.0500	Plywood, Marine 1/4" x 4' x 8'	pc	29.00					
	50 mm x 50 mm Ceiling Joist	bd ft	219.00					
	50 mm x 75 mm Ceiling Joist	bd ft	195.00					
9.1700	Rough Lumber, Sun Dried, Tangule	bd ft	414.00					
9.2100	Finishing Nails	kg	2.00					
	CWN, Assorted	kg	8.00					
9.2200	Concrete Nails	kg	2.00					
	Wood Preservative, Brown	L	3.00					
	25mm x 25mm x 300mm Wood slats @25mm clear spacing ceiling ventilation (provide stainless steel wire mesh inside)	pc	10.00					
<b>Blackboards</b>								
9.1800	S4S Lumber, Kiln Dried, Tangule	bd ft	110.00					
9.2000	Lamant, 1/4" thk	pc	6.00					
9.2100	Finishing Nails	kg	1.00					
4.0400	CWN, Assorted	kg	2.00					
9.2200	Concrete Nails	kg	1.00					
	<b>Sub-total</b>							

ITEM NO.	DESCRIPTION	UNIT	QTY	UNIT COST		TOTAL COST		GRAND TOTAL
				MATERIAL	LABOR	MATERIAL	LABOR	
10.0000	<b>Electrical Works</b>							
	Roughing-ins							
10.0100	Electrical Conduit uPVC, 15mmØ	pc	36.00					
10.0490	RSC 20mmØ	pc	1.00					
10.0800	Entrance Cap 20mm dia	pc	1.00					
10.1200	Junction Box, 4" x 4" G.I.	pc	12.00					
10.1300	Utility Box, 2" x 4" G.I.	pc	6.00					
	Wires & Fixtures							
10.1600	3.5 mm <sup>2</sup> THHN Wire, Stranded	m	474.00					
10.2700	Duplex Convenience Outlet, Grounding Type, 20A, 250V	set	6.00					
10.3200	3 Single Pole Wall Switches in One Switch Plate (10 AMP, 230V)	set	3.00					
10.3610	FL 1 x 40W Industrial Type	set	18.00					
10.3700	Panel Box, Flush Type, 4 Branches	set	1.00					
10.4300	Circuit Breaker, 40A 2P	set	1.00					
10.4100	Circuit Breaker, 20A 2P	set	3.00					
10.5500	Electrical Tape	pc	6.00					
10.5400	Wall Fan, 60W, 230V, 60Hz	set	6.00					
	<b>Sub-total</b>							
6.0000	<b>Doors and Windows</b>							
6.0100	Removal of Door with Jamb	set	3.00					
6.0200	Removal of Window with Jamb	sq.m	51.00					
6.0200	Removal of Window with Jamb	sq.m	9.00					
6.0320	D-1, Panel Door 0.90m x 2.10m on 150mm Wooden Jamb complete with Accessories (lever type door knob)	set	3.00					
6.1000	Jalousie Window with Clear Glass Blades on Jalousie Plus Type Silver Colored Frame with Grilles with Concrete Jamb Divider	set	36.00					
	<b>Sub-total</b>							
13.0000	<b>Painting Works</b>							
	Concrete surfaces	sq.m	330.00					
13.0100	Neutralizer	gal	5.00					
13.0200	Latex, Flat	gal	14.00					
13.0400	Latex, Semi-Gloss	gal	14.00					
13.0500	Acrl Color	qtr	4.00					
	Interior Ceiling	sq.m	168.00					
13.0600	Enamel, Flatwall	gal	9.00					
13.0600	Enamel, Semi Gloss	gal	17.00					
13.0900	Paint Thinner	L	7.00					
	Exterior Ceiling	sq.m	84.00					
13.0600	Enamel, Flatwall	gal	5.00					
13.0600	Enamel, Semi Gloss	gal	9.00					
13.0900	Paint Thinner	L	4.00					
	Doors and Windows	sq.m	128.00					
13.0600	Enamel, Flatwall	gal	7.00					
13.0700	Glazing Putty	gal	7.00					
13.0600	Enamel, Semi Gloss	gal	13.00					
13.0900	Paint Thinner	L	5.00					
	<b>Sub-total</b>							
	<b>Ramp on Fill (with Ramp Railing)</b>	cu.m	0.54					
2.0200	Portland Cement	bag	5.00					
2.0400	Crushed Gravel 1"	cu.m	0.75					
2.0500	Washed Sand	cu.m	0.50					
5.0400	10mm x 8m RSB	kg	23.28					
3.1200	G.I. Tie Wire	kg	1.00					
7.2610	G.I. Pipe 1-1/2"Ø Sch. 40	pc	6.00					
7.9600	Welding Rod	kg	3.00					
	<b>Sub-total</b>							
	Direct Cost							
	Indirect Cost (1.5% of (I-Gen Req))							
	Tax (5% of I & II)							
	<b>Total Construction Cost (I + II + III)</b>							

Prepared:

\_\_\_\_\_  
Contractor





**LOT 2**  
**BUGASONGAN ES**

# CONTRACTOR'S LOGO

## PROGRAM OF WORKS

### BILL OF QUANTITIES

REPAIR 2021 - R VI - AKLAN - 002

School	BUGASONGAN ELEMENTARY SCHOOL	Date:	
School I.D	: 114764	Budget Allocation:	PHP 1,059,858.60
Region	: VI	Engineering and Administrative Overhead:	PHP 0.00
Division	: DIVISION OF AKLAN	Approved Budget for the Contract:	PHP 0.00
Project Title :		Completion Period:	90 calendar days
	<b>: PROPOSED REPAIR AND REHABILITATION OF 1 SCHOOL BUILDING (2 CLASSROOMS)</b>	Minimum Required Manpower:	
		General Foreman	Welder
		Helper	Mason
			Carpenter
			Painter
Location	LEZO, AKLAN	Minimum Required Equipment:	
		Hand Tools	Welding Machine
		One-Bagger Mixer	Bar Cutter

ITEM NO.	Item Description	% of Total	Unit	Quantity	Total Cost	Remarks
	<b>I. DIRECT COST</b>					
	GENERAL REQUIREMENTS		lot	1.00		
	<b>BLDG. 1 - DEMOUNTABLE ARMY TYPE 2CL (7m X 9m) SCHOOL BUILDING</b>					
	Earthworks		lot	1.00		
	Concreting Works		lot	1.00		
	Rebar Works		lot	1.00		
	Formworks		lot	1.00		
	Masonry Works		lot	1.00		
	Roofing Works		lot	1.00		
	Steel Works		lot	1.00		
	Carpentry works		lot	1.00		
	Electrical Works		lot	1.00		
	Doors and Windows		lot	1.00		
	Painting Works		sq m	463.00		
	<b>Sub-Total</b>					
	<b>II. INDIRECT COST</b> ___ % of (I)					
	Overhead Expense (___%)					
	Contingencies (___%)					
	Miscellaneous (___%)					
	Contractor's Profit (___%)					
	<b>Sub-Total</b>					
	<b>III. TAX 5% of (I+II)</b>					
	<b>Sub-Total</b>					
	<b>IV. TOTAL CONSTRUCTION COST (I + II + III)</b>	<b>0.00%</b>			<b>0.00</b>	

Prepared by:

\_\_\_\_\_  
CONTRACTOR

# CONTRACTOR'S LOGO

## PROGRAM OF WORKS BILL OF QUANTITIES

PROJECT : PROPOSED REPAIR AND REHABILITATION OF 1 SCHOOL BUILDING (2 CLASSROOMS)  
 SCHOOL : BUGASONGAN ELEMENTARY SCHOOL  
 LOCATION : LEZO, AKLAN  
 OWNER : DEPARTMENT OF EDUCATION

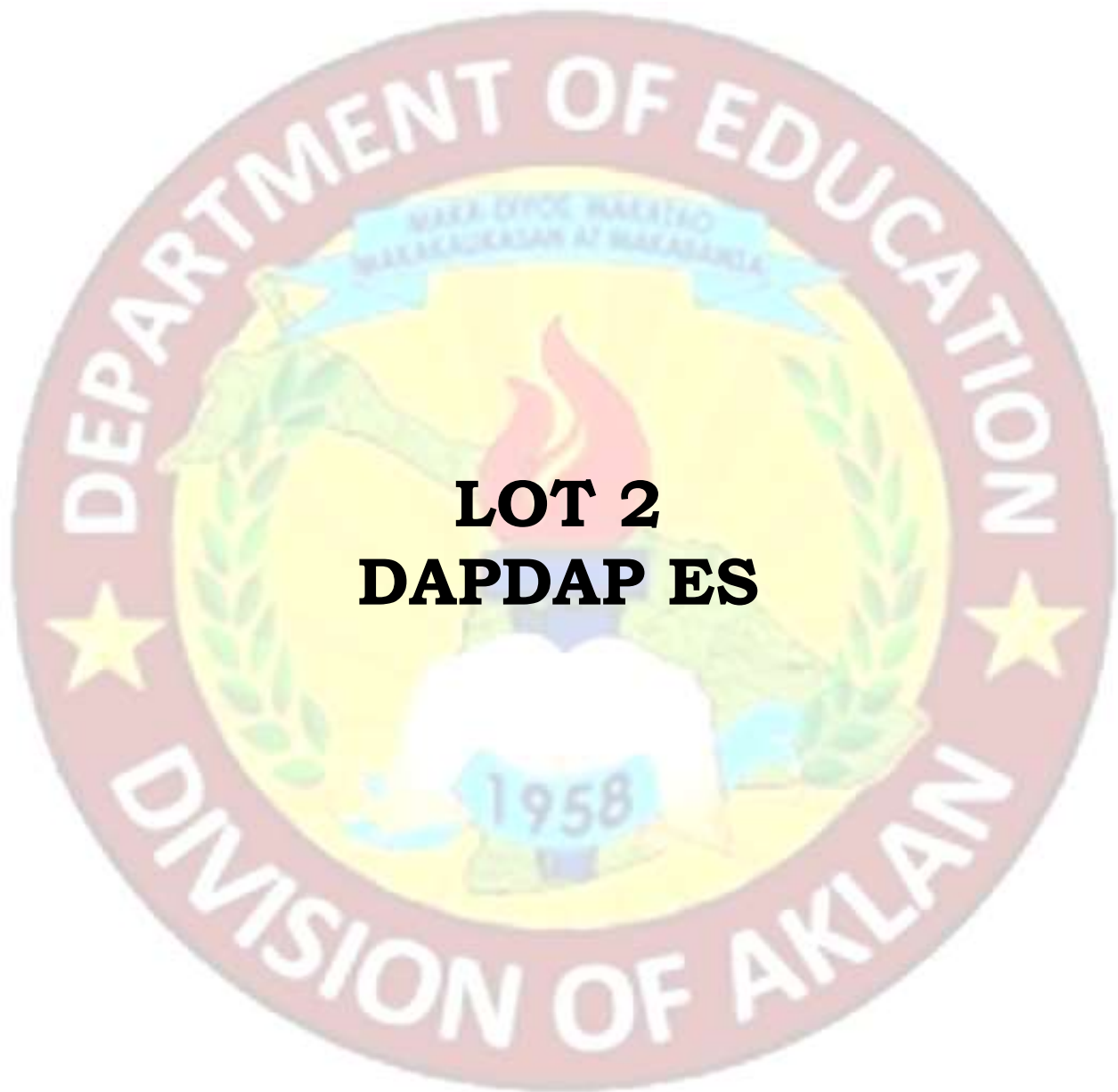
ITEM NO.	DESCRIPTION	UNIT	QTY	UNIT COST		TOTAL COST		GRAND TOTAL
				MATERIAL	LABOR	MATERIAL	LABOR	
<b>GENERAL REQUIREMENTS</b>								
	Mobilization/Temporary Structures, Utilities and Services/Demobilization	lot	1.00					
	Safety and Health	lot	1.00					
	Project Billboard	lot	1.00					
	Fire Safety Inspection Certificate (FSIC)	lot	1.00					
	Other Permit Fee	lot	1.00					
	Hauling cost	lot	1.00					
	<b>Sub-total</b>							
<b>BLDG. 1 - DEMOUNTABLE ARMY TYPE 2CL (7m X 9m) SCHOOL BUILDING</b>								
1.0000	<b>Earthworks</b>							
1.0100	Clearing and Grubbing	sq.m	77.00					
1.0200	Structural Excavation	cu.m	18.00					
1.0300	Backfilling and Compaction	cu.m	11.00					
1.0400	Gravel Bedding G-1	cu.m	8.00					
1.0500	Select Fill	cu.m	8.00					
1.0600	Soil Poisoning	sq.m	65.00					
	<b>Sub-total</b>							
2.0000	<b>Concreting Works</b>							
	Wall Footing	cu.m	3.00					
2.0200	Portland Cement	bag	27.00					
2.0400	Crushed Gravel 1"	cu.m	3.00					
2.0500	Washed Sand	cu.m	1.50					
	Column	cu.m	3.00					
2.0200	Portland Cement	bag	27.00					
2.0300	Crushed Gravel 3/4"	cu.m	3.00					
2.0500	Washed Sand	cu.m	1.50					
	Beams	cu.m	3.00					
2.0200	Portland Cement	bag	27.00					
2.0300	Crushed Gravel 3/4"	cu.m	3.00					
2.0500	Washed Sand	cu.m	1.50					
	Slab on Grade	cu.m	4.00					
2.0200	Portland Cement	bag	36.00					
2.0400	Crushed Gravel 1"	cu.m	4.00					
2.0500	Washed Sand	cu.m	2.00					
	<b>Sub-total</b>							
3.0000	<b>Rebar Works</b>							
3.0500	Wall Footing	kg	228.00					
3.0500	Column	kg	325.00					
3.0500	Beam	kg	224.00					
3.1200	G.I. Tie Wire	kg	78.00					
	<b>Sub-total</b>							
4.0000	<b>Formworks</b>							
	Column	sq.m	15.00					
4.0100	Coco Lumber	bd.ft	255.00					
4.0200	Plywood Ordinary, 1/4" x 4' x 8'	pc	3.00					
4.0400	CWN, Assorted	kg	4.00					
	Beams	sq.m	5.00					
4.0100	Coco Lumber	bd.ft	85.00					
4.0200	Plywood Ordinary, 1/4" x 4' x 8'	pc	1.00					
4.0400	CWN, Assorted	kg	2.00					
	<b>Sub-total</b>							
5.0000	<b>Masonry Works</b>							
	Masonry Wall	sq.m	130.00					
5.0300	CHB 4" thk	pc	1,625.00					
2.0200	Portland Cement	bag	43.00					
2.0500	Washed Sand	cu.m	6.00					
5.0400	10mm x 6m RSB	kg	173.00					
3.1200	G.I. Tie Wire	kg	4.00					
	Plastering	sq.m	260.00					
2.0200	Portland Cement	bag	86.00					
2.0500	Washed Sand	cu.m	9.00					
	<b>Sub-total</b>							

ITEM NO.	DESCRIPTION	UNIT	QTY	UNIT COST		TOTAL COST		GRAND TOTAL
				MATERIAL	LABOR	MATERIAL	LABOR	
8.0000	<b>Roofing Works</b>							
8.0100	Removal of Roofing Sheets	sq.m	148.00					
8.0200	Removal of Ridge Roll	pc	6.00					
8.0300	Removal of Flashing	pc	10.00					
8.0500	Removal of Fascia Board	pc	20.00					
	G.I. Long-Span Roofing, Corrugated, Pre-Painted, 1220mm x 0.5mm BMT	lm	200.00					
	G.I. Flashing, Preformed, Pre-Painted, 0.610m x 2.440m x 0.5mm BMT	pc	10.00					
	G.I. Ridge Roll, Preformed, Pre-Painted, 0.610m x 2.440m x 0.5mm BMT	pc	6.00					
9.1430	Fascia Board, Fiber Cement 12" x 8"	pc	20.00					
7.1040	L 20 x 20 x 2mm	kg	89.00					
7.1020	L 38 x 38 x 4.5mm	kg	66.00					
	3" Flat head Countersunk screw	pc	340.00					
8.0900	J-Bolt (6mm dia.)	pc	840.00					
	Teckscrew 2-3/4"	pc	1,684.00					
8.1300	Roof Sealant	L	4.00					
	<b>Sub-total</b>							
7.0000	<b>Steel Works</b>							
7.3600	Welding Rod	kg	6.00					
13.1100	Primer, Zinc Chromate	gal	6.00					
9.13a	Flat Bar 1" x 3/16"	kg	64.00					
9.13b	L 25 x 25 x 3mm	kg	106.00					
	<b>Sub-total</b>							
9.0000	<b>Carpentry works</b>							
	Interior Ceiling		112.00					
9.0100	Removal of Ceiling	sq.m	112.00					
9.0500	Plywood, Marine 1/4" x 4' x 8'	pc	39.00					
	50 mm x 50 mm Ceiling Joist	bd.ft	193.00					
	50 mm x 75 mm Ceiling Joist	bd.ft	298.00					
9.1700	Rough Lumber, Sun Dried, Tangule	bd.ft	489.00					
9.2100	Finishing Nails	kg	2.00					
4.0400	CWN, Assorted	kg	9.00					
9.2200	Concrete Nails	kg	2.00					
9.1900	Wood Preservative, Brown	L	3.00					
	Exterior Ceiling	sq.m	43.00					
9.0100	Removal of Ceiling	sq.m	43.00					
9.0500	Plywood, Marine 1/4" x 4' x 8'	pc	15.00					
	50 mm x 50 mm Ceiling Joist	bd.ft	154.00					
	50 mm x 75 mm Ceiling Joist	bd.ft	129.00					
9.1700	Rough Lumber, Sun Dried, Tangule	bd.ft	283.00					
9.2100	Finishing Nails	kg	1.00					
4.0400	CWN, Assorted	kg	6.00					
9.2200	Concrete Nails	kg	1.00					
9.1900	Wood Preservative, Brown	L	2.00					
9.1400	25mm x 25mm x 300mm Wood slats @25mm clear spacing ceiling ventilation (provide stainless steel wire mesh inside)	pc	6.00					
	<b>Blackboards</b>							
9.1800	S4S Lumber, Kiln Dried, Tangule	bd.ft	74.00					
9.2000	Lawanit, 1/4" thk	pc	4.00					
9.2100	Finishing Nails	kg	1.00					
4.0400	CWN, Assorted	kg	2.00					
9.2200	Concrete Nails	kg	1.00					
	<b>Sub-total</b>							
10.0000	<b>Electrical Works</b>							
	Roughing-ins							
10.0100	Electrical Conduit uPVC, 15mmØ	pc	24.00					
10.0490	RSC 20mmØ	pc	1.00					
10.0800	Entrance Cap 20mm dia.	pc	1.00					
10.1200	Junction Box, 4" x 4" G.I.	pc	6.00					
10.1300	Utility Box, 2" x 4" G.I.	pc	4.00					
	Wires & Fixtures							
10.1600	3.5 mm <sup>2</sup> THHN Wire, Stranded	m	216.00					
10.2700	Duplex Convenience Outlet, Grounding Type	set	6.00					
10.3200	3 Single Pole Wall Switches in One Switch	set	2.00					
10.3610	FL 1 x 40W Industrial Type	set	10.00					
10.5500	Electrical Tape	pc	4.00					
10.1700	5.5 mm <sup>2</sup> THHN Wire, Stranded	m	34.00					
10.3700	Panel Box, Flush Type, 4 Branches	set	1.00					
10.4300	Circuit Breaker, 40A 2P	set	1.00					
10.4100	Circuit Breaker, 20A 2P	set	3.00					
10.5400	Wall Fan, 60W, 230V, 60Hz	set	4.00					
	<b>Sub-total</b>							

ITEM NO.	DESCRIPTION	UNIT	QTY	UNIT COST		TOTAL COST		GRAND TOTAL
				MATERIAL	LABOR	MATERIAL	LABOR	
6.0000	<b>Doors and Windows</b>							
6.0100	Removal of Door with Jamb	set	2.00					
6.0200	Removal of Window with Jamb	sq.m	34.00					
6.0200	Removal of Window with Jamb	sq.m	6.00					
6.0320	D-1, Panel Door 0.90m x 2.10m on 150mm Wooden Jamb complete with Accessories (lever type door knob)	set	4.00					
	Jalousie Window with Clear Glass Blade on Jalouplus Type Silver Colored Frame with Grilles with Concrete Jambs 1.6 x 0.6m	set	24.00					
	<b>Sub-total</b>							
13.0000	<b>Painting Works</b>							
	Concrete surfaces	sq.m	220.00					
13.0100	Neutralizer	gal	3.00					
13.0200	Latex, Flat	gal	9.00					
13.0400	Latex, Semi Gloss	gal	9.00					
13.0500	Acri Color	qtr	3.00					
	Interior Ceiling	sq.m	112.00					
13.0600	Enamel, Flatwall	gal	6.00					
13.0800	Enamel, Semi Gloss	gal	12.00					
13.0900	Paint Thinner	L	5.00					
	Exterior Ceiling	sq.m	43.00					
13.0600	Enamel, Flatwall	gal	3.00					
13.0800	Enamel, Semi Gloss	gal	5.00					
13.0900	Paint Thinner	L	2.00					
	Doors and Windows	sq.m	88.00					
13.0600	Enamel, Flatwall	gal	5.00					
13.0700	Glazing Putty	gal	5.00					
13.0800	Enamel, Semi Gloss	gal	9.00					
13.0900	Paint Thinner	L	4.00					
	<b>Sub-total</b>							
	Direct Cost							0.00
	Indirect Cost ( ... % of (I-Gen Req))							0.00
	Tax (5% of I & II)							0.00
	<b>Total Construction Cost (I + II + III)</b>							<b>0.00</b>

Prepared by:

CONTRACTOR



**LOT 2**  
**DAPDAP ES**

# CONTRACTOR'S LOGO

## PROGRAM OF WORKS

### BILL OF QUANTITIES

REPAIR 2022 - R VI - AKLAN - 006

School : DAPDAP ELEMENTARY SCHOOL	Date:
School I.D : 114928	Budget Allocation: <span style="float: right;">PHP 742,820.94</span>
Region : VI	Engineering and Administrative Overhead: <span style="float: right;">PHP 0.00</span>
Division : DIVISION OF AKLAN	Approved Budget for the Contract: <span style="float: right;">PHP 0.00</span>
Project Title :	Completion Period: <span style="float: right;">90 calendar days</span>
: PROPOSED REPAIR AND REHABILITATION OF 1 SCHOOL BUILDING (2 CLASSROOMS)	Minimum Required Manpower:
	General Foreman                      Welder                      Carpenter
	Helper                                      Mason                      Painter
Location : TANGALAN, AKLAN	Minimum Required Equipment:
	Hand Tools                                      Welding Machine
	One-Bagger Mixer                              Bar Cutter

ITEM NO.	Item Description	% of Total	Unit	Quantity	Total Cost	Remarks
	<b>I. DIRECT COST</b>					
	GENERAL REQUIREMENTS		lot	1.00	-	
	Building #1: BLSS TYPE BULIDING(6m x 8m) 3CL					
	Masonry Works		sq m	36.00	-	
	Roofing Works		lm	179.00	-	
	Steel Works		lot	1.00	-	
	Carpentry Works		sq m	125.00	-	
	Electrical Works		lot	1.00	-	
	Doors and Windows		lot	1.00	-	
	Painting Works		sq m	406.00	-	
	Ramp on Fill (with Ramp Railing)		lot	1.00	-	
	<b>Sub-Total</b>				-	
	<b>II. INDIRECT COST</b> ___% of (I)					
	Overhead Expense ( ___ %)					
	Contingencies ( ___ %)				-	
	Miscellaneous ( ___ %)				-	
	Contractor's Profit ( ___ %)				-	
	<b>Sub-Total</b>				-	
	<b>III. TAX</b> 5% of (i+ii)				-	
	<b>Sub-Total</b>				-	
					-	
	<b>IV. TOTAL CONSTRUCTION COST (i + ii + iii)</b>	<b>0.00%</b>			-	

Prepared by:

\_\_\_\_\_

CONTRACTOR

# CONTRACTOR'S LOGO

## PROGRAM OF WORKS DETAILED COST ESTIMATE

PROJECT : PROPOSED REPAIR AND REHABILITATION OF 1 SCHOOL BUILDING (2 CLASSROOMS)  
 SCHOOL : GARDAP ELEMENTARY SCHOOL  
 LOCATION : TANGALAN, ARLAN  
 OWNER : DEPARTMENT OF EDUCATION

ITEM NO.	DESCRIPTION	UNIT	QTY	UNIT COST		TOTAL COST		GRAND TOTAL
				MATERIAL	LABOR	MATERIAL	LABOR	
<b>GENERAL REQUIREMENTS</b>								
	Mobilization/Temporary Structures, Utilities and Services/Demobilization	lot	1.00					
	Safety and Health	lot	1.00					
	Project Signboard	lot	1.00					
	Fire Safety Inspection Certificate (FSIC)	lot	1.00					
	Other Permit Fee	lot	1.00	-	-	-	-	-
	Hauling cost	lot	1.00	-	-	-	-	-
	<b>Sub-total</b>							
<b>Building #1-BLSS TYPE BUILDING(6m x 6m) 2CL</b>								
<b>5.0000 Masonry Works</b>								
	Plastering	sq.m	36.00					
2.0200	Portland Cement	bag	13.00					
2.0500	Washed Sand	cu.m	3.00					
	<b>Sub-total</b>							
<b>0.0000 Roofing Works</b>								
8.010	Removal of Roofing Sheets	sq.m	158.00					
8.020	Removal of Ridge Roll	pc	7.00					
8.030	Removal of Flashing	pc	8.00					
8.050	Removal of Fascia Board	pc	22.00					
	G.I. Long-Span Roofing, Corrugated, Pre-Painted, 1220mm x 0.5mm BMT	lm	179.00					
	G.I. Flashing, Preformed, Pre-Painted, 0.610m x 2.440m x 0.5mm BMT	pc	8.00					
	G.I. Ridge Roll, Preformed, Pre-Painted, 0.610m x 2.440m x 0.5mm BMT	pc	7.00					
9.1430	Fascia Board, Fiber Cement 12" x 8"	pc	22.00					
7.1040	L 20 x 20 x 2mm	kg	96.00					
7.1020	L 38 x 38 x 4.5mm	kg	81.00					
	3" Flat head Countersunk screw	pc	360.00					
8.0900	J-Bolt (8mm dia.)	pc	1,050.00					
	Tackscrew 2-5"	pc	2,848.00					
8.1300	Rod Sealant	L	4.00					
	<b>Sub-total</b>							
<b>7.0000 Steel Works</b>								
7.0900	L 50 x 50 x 6mm	kg	861.00					
7.0200	2" x 4" x 1.5mm C - purlins	kg	675.00					
7.1010	L 50 x 50 x 2mm	kg	20.00					
7.1810	Machine Bolts ( 10 mm dia. )	pc	120.00					
7.2200	12mmØ Bag Rods with Standard Nuts and Washers	pc	48.00					
7.1900	Plain Round Bar 18mmØ x 6m	pc	8.00					
7.2100	Turn Buckle 18 mmØ	pc	8.00					
7.1510	Anchor Bolt with Nuts and Washer, 12mmØ x 50mm x 300mm	pc	20.00					
7.1700	Anchor Bolt with Nuts and Washer, 10mmØ x 50mm x 300mm	pc	3.00					
7.1200	Steel Plate 1.20m x 2.40m x 8mm thk	pc	1.00					
	Steel Plate 1.20m x 2.40m x 10mm thk	pc	0.25					
7.3800	Welding Rod	kg	34.00					
13.1100	Primer, Zinc Chromate	gal	5.00					
	<b>Sub-total</b>							
<b>9.0000 Carpentry works</b>								
<b>Interior Ceiling</b>								
9.0100	Removal of Ceiling	sq.m	96.00					
9.0500	Plywood, Marine 1/4" x 4' x 8'	pc	34.00					
	50 mm x 50 mm Ceiling Joist	bd.ft	228.00					
	50 mm x 75 mm Ceiling Joist	bd.ft	340.00					
9.1700	Rough Lumber, Sun Dried, Tangule	bd.ft	873.00					
9.2100	Finishing Nails	kg	3.00					
4.0400	CWN, Assorted	kg	11.00					
9.2200	Concrete Nails	kg	3.00					
9.1900	Wood Preservative, Brown	L	4.00					
<b>Exterior Ceiling</b>								
9.0100	Removal of Ceiling	sq.m	29.00					
9.0500	Plywood, Marine 1/4" x 4' x 8'	pc	10.00					
	50 mm x 50 mm Ceiling Joist	bd.ft	149.00					
	50 mm x 75 mm Ceiling Joist	bd.ft	136.00					
9.1700	Rough Lumber, Sun Dried, Tangule	bd.ft	265.00					
9.2100	Finishing Nails	kg	1.00					
4.0400	CWN, Assorted	kg	6.00					
9.2200	Concrete Nails	kg	1.00					
9.1900	Wood Preservative, Brown	L	2.00					
9.1400	25mm x 25mm x 300mm Wood slats @25mm clear spacing ceiling ventilation (provide stainless steel wire mesh inside)	pc	4.00					
<b>Blackboards</b>								
9.1800	B45 Lumber, Kiln Dried, Tangule	bd.ft	74.00					
9.2000	Lewant, 1/4" thk	pc	4.00					
9.2100	Finishing Nails	kg	1.00					
4.0400	CWN, Assorted	kg	2.00					
9.2200	Concrete Nails	kg	1.00					
	<b>Sub-total</b>							



ITEM NO.	DESCRIPTION	UNIT	QTY	UNIT COST		TOTAL COST		GRAND TOTAL
				MATERIAL	LABOR	MATERIAL	LABOR	
<b>Electrical Works</b>								
<b>Roughing-ins</b>								
10.0100	Electrical Conduit uPVC, 15mmØ	pc	30.00					
10.0490	RSC 20mmØ	pc	2.00					
10.0800	Entrance Cap 20mm dia.	pc	2.00					
10.1200	Junction Box, 4" x 4" G.I.	pc	8.00					
10.1300	Utility Box, 2" x 4" G.I.	pc	8.00					
<b>Wires &amp; Fixtures</b>								
10.1800	2.5 mm² THHN Wire, Stranded	m	300.00					
10.2700	Duplex Convenience Outlet, Grounding Type, 20A, 250V	set	8.00					
10.3200	3 Single Pole Wall Switches in One Switch Plate (10 AMP, 250V)	set	7.00					
10.3610	FL 1 x 40W Industrial Type	set	10.00					
10.3310	Safety Switch 30A 2P	set	2.00					
10.5500	Electrical Tape	pc	4.00					
<b>Sub-total</b>								
<b>6.0000 Doors and Windows</b>								
6.0100	Removal of Door with Jamb	set	3.00					
6.0200	Removal of Window with Jamb	sq m	51.00					
6.0900	Door Jamb	bd ft	88.00					
6.0320	D-1, Panel Door 0.90m x 2.10m on 150mm Wooden Jamb complete with Accessories (lever type door knob)	set	2.00					
6.1009	Jalousie Window with Clear Glass Blades on JalousPlus Type Silver Colored Frame and fixed glass transom on a concrete window jamb with Grilles	set	11.00					
<b>Sub-total</b>								
<b>13.0000 Painting Works</b>								
<b>Concrete surfaces</b>								
13.0100	Neutralizer	gal	3.00					
13.0200	Latex, Flat	gal	12.00					
13.0400	Latex, Semi Gloss	gal	12.00					
13.0500	Acri Color	qt	3.00					
<b>Interior Ceiling</b>								
13.0800	Enamel, Flatwall	gal	5.00					
13.0900	Enamel, Semi Gloss	gal	5.00					
13.0900	Paint Thinner	gal	3.00					
<b>Exterior Ceiling</b>								
13.0800	Enamel, Flatwall	gal	2.50					
13.0800	Enamel, Semi Gloss	gal	2.00					
13.0900	Paint Thinner	gal	1.50					
<b>Doors and Windows</b>								
13.0600	Enamel, Flatwall	gal	3.00					
13.0700	Glazing Putty	gal	3.00					
13.0800	Enamel, Semi Gloss	gal	3.00					
13.0900	Paint Thinner	gal	2.00					
<b>Sub-total</b>								
<b>Ramp on Fill (with Ramp Railing)</b>								
2.0200	Portland Cement	bag	5.00					
2.0400	Crushed Gravel 1"	cu.m	0.75					
2.0500	Washed Sand	cu.m	0.50					
5.0400	10mm x 6m RSB	kg	23.28					
3.1200	G.I. Tie Wire	kg	1.00					
7.2610	G.I. Pipe 1-1/2" Sch. 40	pc	8.00					
7.3600	Welding Rod	kg	3.00					
<b>Sub-total</b>								
<b>I. Direct Cost</b>								
<b>II. Indirect Cost (1.5% of I-Gain Resp)</b>								
<b>III. Tax (5% of I &amp; II)</b>								
<b>IV. Total Construction Cost (I + II + III)</b>								
								<b>0.00</b>

Prepared by:

CONTRACTOR



**LOT 2**  
**JAWILI IS**

# CONTRACTOR'S LOGO

## PROGRAM OF WORKS

### BILL OF QUANTITIES

REPAIR 2022 - REGION VI - AKLAN - 000

School:	Jawili Integrated School	Date:				
School I.D :	500183	Budget Allocation:	PHP 779,456.07			
Region :	VI	Engineering and Administrative Overhead:	PHP 0.00			
Division :	DIVISION OF AKLAN	Approved Budget for the Contract:	PHP 0.00			
Project Title :		Completion Period:	90 calendar days			
	: PROPOSED REPAIR AND REHABILITATION OF 1 SCHOOL BUILDING (1 CLASSROOMS)	Minimum Required Manpower:				
		General Foreman	Welder	Carpenter		
		Helper	Mason	Painter		
Plan :		Minimum Required Equipment:				
Location	TANGALAN, AKLAN	Hand Tools	Welding Machine			
		One-Bagger Mixer	Bar Cutter			
ITEM NO.	Item Description	% of Total	Unit	Quantity	Total Cost	Remarks
	I. DIRECT COST					
	GENERAL REQUIREMENTS		lot			
	BLDG. 1 - HE TYPE SCHOOL BUILDING W/ EXTENSION1 CLASSROOM					
5.000	Masonry Works		lot			
8.000	Roofing Works		lot			
7.000	Steel Works		lot			
9.000	Carpentry Works		lot			
10.000	Electrical Works		lot			
6.000	Doors and Windows		lot			
13.000	Painting Works		sq m			
	Ramp on Fill (with Ramp Railing)		lot			
	Sub-Total					
	II. INDIRECT COST - % of (I)					
	Overhead Expenses ( _ %)					
	Contingencies ( _ %)					
	Miscellaneous ( _ %)					
	Contractor's Profit ( _ %)					
	Sub-Total					
	III. TAX 5% of (I+II)					
	Sub-Total					
	IV. TOTAL CONSTRUCTION COST (I + II + III)	0.00%			0.00	

Prepared by:

CONTRACTOR

# CONTRACTOR'S LOGO

## PROGRAM OF WORKS

### DETAILED COST ESTIMATE

PROJECT : PROPOSED REPAIR AND REHABILITATION OF 1 SCHOOL BUILDING (1 CLASSROOMS)  
 SCHOOL : Jawili Integrated School  
 LOCATION : TANGALAN, ARLAN  
 OWNER : DEPARTMENT OF EDUCATION

ITEM NO.	DESCRIPTION	UNIT	QTY	UNIT COST		TOTAL COST		GRAND TOTAL
				MATERIAL	LABOR	MATERIAL	LABOR	
<b>GENERAL REQUIREMENTS</b>								
	Mobilization/Temporary Structures, Utilities and Services/Demobilization.	lot	1.00					
	Safety and Health	lot	1.00					
	Project Bitboard	lot	1.00					
	Fire Safety Inspection Certificate (FSIC)	lot	1.00					
	Other Permit Fee	lot	1.00					
	Hauling cost	lot	1.00					
	Sub-total							
<b>BLDG. 1 - HE TYPE SCHOOL BUILDING W/ EXTENSION 1 CLASSROOM</b>								
<b>5.0000 Masonry Works</b>								
	Plastering	sq.m	57.00					
2.0200	Portland Cement	bag	19.00					
2.0500	Washed Sand	cu.m	2.00					
	Sub-total							
<b>8.0000 Roofing Works</b>								
8.0100	Removal of Roofing Sheets	sq.m	103.00					
8.0200	Removal of Ridge Roll	pc	8.00					
8.0300	Removal of Flashing	pc	9.00					
8.0500	Removal of Fascia Board	pc	22.00					
8.0800	G.I. Long-Span Roofing, Corugated, Pre-Painted, 1230mm x 0.5mm BMT	lm	130.00					
8.0800	G.I. Flashing, Preformed, Pre-Painted, 0.610m x 2.440m x 0.5mm BMT	pc	8.00					
8.0700	G.I. Ridge Roll, Preformed, Pre-Painted, 0.610m x 2.440m x 0.5mm BMT	pc	5.00					
9.1430	Fascia Board, Fiber Cement 12" x 8"	pc	15.00					
	L 20 x 20 x 2mm	kg	63.00					
	L 38 x 38 x 4.5mm	kg	40.00					
	3" Flat head Countersunk screw	pc	247.00					
	J-Bolt (8mm dia.)	pc	689.00					
8.1000	Teckscrew 2-3/4"	pc	1,202.00					
8.1300	Roof Sealant	L	3.00					
8.1100	Blind Rivets	pc	130.00					
	Sub-total							
<b>7.0000 Steel Works</b>								
7.0900	L 50 x 50 x 6mm	kg	603.00					
7.0200	2" x 4" x 1.5mm C - purline	kg	575.00					
7.1010	L 50 x 50 x 2mm	kg	29.00					
7.1810	Machine Bolts ( 10 mm dia. )	pc	120.00					
7.2200	12mmØ Sag Rods with Standard Nuts and Washers	pc	48.00					
7.1900	Plain Round Bar 16mmØ x 6m	pc	8.00					
7.2100	Turn Buckle 16 mmØ	pc	8.00					
7.1510	Anchor Bolt with Nuts and Washer, 12mmØ x 100mm x 300mm	pc	20.00					
7.1700	Anchor Bolt with Nuts and Washer, 10mmØ x 100mm x 300mm	pc	3.00					
7.1200	Steel Plate 1.20m x 2.40m x 6mm thk	pc	1.00					
	Steel Plate 1.20m x 2.40m x 10mm thk	pc	0.25					
7.3600	Welding Rod	kg	34.00					
13.1100	Primer, Zinc Chromate	gsl	4.00					
	Sub-total							
<b>9.0000 Carpentry Works</b>								
<b>Interior ceiling</b>								
9.0100	Removal of Ceiling	sq.m	78.00					
9.0500	Plywood, Marine 1/4" x 4' x 8'	pc	28.00					
	50 mm x 50 mm Ceiling Joist	bd.ft	137.00					
	50 mm x 75 mm Ceiling Joist	bd.ft	206.00					
9.1700	Rough Lumber, Sun Dried, Tanguile	bd.ft	343.00					
9.2100	Finishing Nails	kg	2.00					
	CWN, Assorted	kg	7.00					
9.2200	Concrete Nails	kg	2.00					
	Wood Preservative, Brown	L	3.00					
<b>Exterior ceiling</b>								
9.0100	Removal of Ceiling	sq.m	36.00					
9.0500	Plywood, Marine 1/4" x 4' x 8'	pc	13.00					
	50 mm x 50 mm Ceiling Joist	bd.ft	95.00					
	50 mm x 75 mm Ceiling Joist	bd.ft	85.00					
9.1700	Rough Lumber, Sun Dried, Tanguile	bd.ft	180.00					
9.2100	Finishing Nails	kg	1.00					
	CWN, Assorted	kg	4.00					
9.2200	Concrete Nails	kg	1.00					
	Wood Preservative, Brown	L	2.00					
	25mm x 25mm x 300mm Wood slats @25mm clear spacing ceiling ventilation (provide stainless steel wire mesh inside)	pc	6.00					
<b>Blackboards</b>								
9.1800	3/4S Lumber, Kiln Dried, Tanguile	bd.ft	37.00					
9.2000	Layert, 1/4" thk	pc	2.00					
9.2100	Finishing Nails	kg	1.00					
4.0400	CWN, Assorted	kg	1.00					
9.2200	Concrete Nails	kg	1.00					
	Sub-total							

ITEM NO.	DESCRIPTION	UNIT	QTY	UNIT COST		TOTAL COST		GRAND TOTAL
				MATERIAL	LABOR	MATERIAL	LABOR	
10.0000	<b>Electrical Works</b>							
	Roughing-in							
10.0100	Electrical Conduit uPVC, 15mmØ	pc	22.00					
10.0400	RSC 20mmØ	pc	1.00					
10.0600	Entrance Cap 20mm dia.	pc	1.00					
10.1200	Junction Box, 4" x 4" G.I.	pc	4.00					
10.1300	Utility Box, 2" x 4" G.I.	pc	2.00					
	Wires & Fittings							
10.1600	3.5 mm <sup>2</sup> THHN Wire, Stranded	m	466.00					
10.2700	Duplex Convenience Outlet, Grounding Type, 20A, 250V	set	10.00					
10.3200	3 Single Pole Wall Switches in One Switch Plate (10 AMP, 230V)	set	2.00					
10.3610	FL, 1 x 40W Industrial Type	set	10.00					
10.3700	Panel Box, Flush Type, 6 Branches	set	1.00					
10.4300	Circuit Breaker, 60A 2P	set	1.00					
10.4100	Circuit Breaker, 20A 2P	set	5.00					
10.5500	Electrical Tape	pc	2.00					
10.5400	Wall Fan, 60W, 230V, 60Hz	set	6.00					
	Sub-total							
6.0000	<b>Doors and Windows</b>							
6.0100	Removal of Door with Jamb	set	4.00					
6.0200	Removal of Window with Jamb	sq.m	68.00					
6.0200	Removal of Window with Jamb	sq.m	12.00					
6.0320	D-1, Panel Door 0.90m x 2.10m on 150mm Wooden Jamb complete with Accessories (lever type door knob)	set	2.00					
	D-3, (0.70m x 2.10m) Flush Door with concrete jamb and door knob	set	2.00					
6.1008	Jalousie Window on concrete jamb with Clear Glass Blades on JalousPlus Type Silver Colored Frame with Grilles	sq.ft	261.00					
	Sub-total							
13.0000	<b>Painting Works</b>							
	Concrete surfaces	sq.m	189.00					
13.0100	Neutralizer	gal	3.00					
13.0200	Latex, Flat	gal	7.00					
13.0400	Latex, Semi Gloss	gal	7.00					
13.0500	Acri Color	lit	2.00					
	Interior Ceiling	sq.m	78.00					
13.0600	Enamel, Flatwall	gal	4.00					
13.0800	Enamel, Semi Gloss	gal	8.00					
13.0900	Paint Thinner	L	3.00					
	Exterior Ceiling	sq.m	38.00					
13.0600	Enamel, Flatwall	gal	2.00					
13.0800	Enamel, Semi Gloss	gal	4.00					
13.0900	Paint Thinner	L	2.00					
	Doors and Windows	sq.m	168.00					
13.0600	Enamel, Flatwall	gal	9.00					
13.0700	Glazing Putty	gal	9.00					
13.0800	Enamel, Semi Gloss	gal	17.00					
13.0900	Paint Thinner	L	7.00					
	Sub-total							
	<b>Ramp on Fill (with Ramp Railing)</b>	cu.m	0.54					
2.0200	Portland Cement	bag	5.00					
2.0400	Crushed Gravel 1"	cu.m	0.75					
2.0500	Washed Sand	cu.m	0.50					
5.0400	10mm x 6m RSS	kg	23.28					
3.1200	G.I. Tie Wire	kg	1.00					
7.2510	G.I. Pipe 1-1/2"Ø Sch. 40	pc	6.00					
7.3600	Welding Rod	kg	3.00					
	Sub-total							0.00
	Direct Cost							0.00
	Indirect Cost (___% of (I-Direct Cost))							0.00
	Tax (2% of (A + B))							0.00
	<b>Total Construction Cost (I + A + B)</b>							<b>0.00</b>

Prepared by:

CONTRACTOR

## **Section IX.**

### **Checklist of Technical and Financial Documents**

#### **Notes on the Checklist of Technical and Financial Documents**

The prescribed documents in the checklist are mandatory to be submitted in the Bid, but shall be subject to the following:

- a. GPPB Resolution No. 09-2020 on the efficient procurement measures during a State of Calamity or other similar issuances that shall allow the use of alternate documents in lieu of the mandated requirements; or
- b. any subsequent GPPB issuances adjusting the documentary requirements after the effectivity of the adoption of the PBDs.

The BAC shall be checking the submitted documents of each Bidder against this checklist to ascertain if they are all present, using a non-discretionary “pass/fail” criterion pursuant to Section 30 of the 2016 revised IRR of RA No. 9184.

# Checklist of Technical and Financial Documents

## I. TECHNICAL COMPONENT ENVELOPE

### Class "A" Documents

#### Legal Documents

- (a) Valid PhilGEPS Registration Certificate (Platinum Membership) (all pages);  
**or**
- (b) Registration certificate from Securities and Exchange Commission (SEC), Department of Trade and Industry (DTI) for sole proprietorship, or Cooperative Development Authority (CDA) for cooperatives or its equivalent document;  
**and**
- (c) Mayor's or Business permit issued by the city or municipality where the principal place of business of the prospective bidder is located, or the equivalent document for Exclusive Economic Zones or Areas;  
**and**
- (e) Tax clearance per E.O. No. 398, s. 2005, as finally reviewed and approved by the Bureau of Internal Revenue (BIR).

#### Technical Documents

- (f) Statement of the prospective bidder of all its ongoing government and private contracts, including contracts awarded but not yet started, if any, whether similar or not similar in nature and complexity to the contract to be bid; **and**
- (g) Statement of the bidder's Single Largest Completed Contract (SLCC) similar to the contract to be bid, except under conditions provided under the rules; **and**
- (h) Philippine Contractors Accreditation Board (PCAB) License;  
**or**  
Special PCAB License in case of Joint Ventures;  
**and** registration for the type and cost of the contract to be bid;  
**and**
- (i) Original copy of Bid Security. If in the form of a Surety Bond, submit also a certification issued by the Insurance Commission;  
**or**  
Original copy of Notarized Bid Securing Declaration; **and**
- (j) Project Requirements, which shall include the following:
  - a. Organizational chart for the contract to be bid;
  - b. List of contractor's key personnel (*e.g.*, Project Manager, Project Engineers, Materials Engineers, and Foremen), to be assigned to the contract to be bid, with their complete

- qualification and experience data;
    - c. List of contractor's major equipment units, which are owned, leased, and/or under purchase agreements, supported by proof of ownership or certification of availability of equipment from the equipment lessor/vendor for the duration of the project, as the case may be; **and**
  - (k) Original duly signed Omnibus Sworn Statement (OSS); **and** if applicable, Original Notarized Secretary's Certificate in case of a corporation, partnership, or cooperative; or Original Special Power of Attorney of all members of the joint venture giving full power and authority to its officer to sign the OSS and do acts to represent the Bidder.

Financial Documents

- (l) The prospective bidder's audited financial statements, showing, among others, the prospective bidder's total and current assets and liabilities, stamped "received" by the BIR or its duly accredited and authorized institutions, for the preceding calendar year which should not be earlier than two (2) years from the date of bid submission; **and**
- (m) The prospective bidder's computation of Net Financial Contracting Capacity (NFCC).

**Class "B" Documents**

- (n) If applicable, duly signed joint venture agreement (JVA) in accordance with RA No. 4566 and its IRR in case the joint venture is already in existence; **or** duly notarized statements from all the potential joint venture partners stating that they will enter into and abide by the provisions of the JVA in the instance that the bid is successful.

**II. FINANCIAL COMPONENT ENVELOPE**

- (o) Original of duly signed and accomplished Financial Bid Form; **and**

Other documentary requirements under RA No. 9184

- (p) Original of duly signed Bid Prices in the Bill of Quantities; **and**
- (q) Duly accomplished Detailed Estimates Form, including a summary sheet indicating the unit prices of construction materials, labor rates, and equipment rentals used in coming up with the Bid; **and**
- (r) Cash Flow by Quarter.
- (s) Soft Copy (**Optional**, for quick and easy evaluation of the BAC and TWG)



Project ID:  
Project Name:  
Location of the Project:

### **Performance Securing Declaration (Revised)**

[if used as an alternative performance security but it is not required to be submitted with the Bid, as it shall be submitted within ten (10) days after receiving the Notice of Award]

REPUBLIC OF THE PHILIPPINES)  
CITY OF \_\_\_\_\_ ) S.S.

#### **PERFORMANCE SECURING DECLARATION**

Invitation to Bid: [Insert Reference Number indicated in the Bidding Documents]  
To: [Insert name and address of the Procuring Entity]

I/We, the undersigned, declare that:

1. I/We understand that, according to your conditions, to guarantee the faithful performance by the supplier/distributor/manufacturer/contractor/consultant of its obligations under the Contract, I/we shall submit a Performance Securing Declaration within a maximum period of ten (10) calendar days from the receipt of the Notice of Award prior to the signing of the Contract.

2. I/We accept that: I/we will be automatically disqualified from bidding for any procurement contract with any procuring entity for a period of one (1) year for the first offense, or two (2) years **for the second offense**, upon receipt of your Blacklisting Order if I/We have violated my/our obligations under the Contract;

3. I/We understand that this Performance Securing Declaration shall cease to be valid upon:

a. issuance by the Procuring Entity of the Certificate of Final Acceptance, subject to the following conditions:

i. Procuring Entity has no claims filed against the contract awardee;

ii. It has no claims for labor and materials filed against the contractor; and

iii. Other terms of the contract; or

b. replacement by the winning bidder of the submitted PSD with a performance security in any of the prescribed forms under Section 39.2 of the 2016 revised IRR of RA No. 9184 as required by the end-user.

**IN WITNESS WHEREOF**, I/We have hereunto set my/our hand/s this \_\_\_\_ day of [month] [year] at [place of execution].

*[Insert NAME OF BIDDER OR ITS  
AUTHORIZED REPRESENTATIVE]  
[Insert signatory's legal capacity]  
Affiant*

**[Jurat]**

*[Format shall be based on the latest Rules on Notarial Practice]*

Project ID:  
Project Name:  
Location of the Project:

## **Omnibus Sworn Statement (Revised)**

[shall be submitted with the Bid]

---

REPUBLIC OF THE PHILIPPINES )  
CITY/MUNICIPALITY OF \_\_\_\_\_ ) S.S.

### **AFFIDAVIT**

I, [Name of Affiant], of legal age, [Civil Status], [Nationality], and residing at [Address of Affiant],  
after having been duly sworn in accordance with law, do hereby depose and state that:

1. [Select one, delete the other:]

[If a sole proprietorship:] I am the sole proprietor or authorized representative of [Name of Bidder] with office address at [address of Bidder];

[If a partnership, corporation, cooperative, or joint venture:] I am the duly authorized and designated representative of [Name of Bidder] with office address at [address of Bidder];

1. [Select one, delete the other:]

[If a sole proprietorship:] As the owner and sole proprietor, or authorized representative of [Name of Bidder], I have full power and authority to do, execute and perform any and all acts necessary to participate, submit the bid, and to sign and execute the ensuing contract for [Name of the Project] of the [Name of the Procuring Entity], as shown in the attached duly notarized Special Power of Attorney;

[If a partnership, corporation, cooperative, or joint venture:] I am granted full power and authority to do, execute and perform any and all acts necessary to participate, submit the bid, and to sign and execute the ensuing contract for [Name of the Project] of the [Name of the Procuring Entity], as shown in the attached [state title of attached document showing proof of authorization (e.g., duly notarized Secretary's Certificate, Board/Partnership Resolution, or Special Power of Attorney, whichever is applicable)];

3. [Name of Bidder] is not "blacklisted" or barred from bidding by the Government of the Philippines or any of its agencies, offices, corporations, or Local Government Units, foreign government/foreign or international financing institution whose blacklisting rules have been recognized by the Government Procurement Policy Board, **by itself or by relation, membership, association, affiliation, or controlling interest with another blacklisted person or entity as defined and provided for in the Uniform Guidelines on Blacklisting**;

4. Each of the documents submitted in satisfaction of the bidding requirements is an authentic copy of the original, complete, and all statements and information provided therein are true and correct;

5. [Name of Bidder] is authorizing the Head of the Procuring Entity or its duly authorized representative(s) to verify all the documents submitted;

6. [Select one, delete the rest:]

[If a sole proprietorship:] The owner or sole proprietor is not related to the Head of the Procuring Entity, members of the Bids and Awards Committee (BAC), the Technical Working Group, and the BAC Secretariat, the head of the Project Management Office or the end-user unit, and the project consultants by consanguinity or affinity up to the third civil degree;

[If a partnership or cooperative:] None of the officers and members of [Name of Bidder] is related to the Head of the Procuring Entity, members of the Bids and Awards Committee (BAC), the Technical Working Group, and the BAC Secretariat, the head of the Project Management Office or the end-user unit, and the project consultants by consanguinity or affinity up to the third civil degree;

[If a corporation or joint venture:] None of the officers, directors, and controlling stockholders of [Name of Bidder] is related to the Head of the Procuring Entity, members of the Bids and Awards Committee (BAC), the Technical Working Group, and the BAC Secretariat, the head of the Project Management Office or the end-user unit, and the project consultants by consanguinity or affinity up to the third civil degree;

7. [Name of Bidder] complies with existing labor laws and standards; and

8. [Name of Bidder] is aware of and has undertaken the responsibilities as a Bidder in compliance with the Philippine Bidding Documents, which includes:

- a. Carefully examining all of the Bidding Documents;
- b. Acknowledging all conditions, local or otherwise, affecting the implementation of the Contract;
- c. Making an estimate of the facilities available and needed for the contract to be bid, if any; and
- d. Inquiring or securing Supplemental/Bid Bulletin(s) issued for the [Name of the Project].

9. [Name of Bidder] did not give or pay directly or indirectly, any commission, amount, fee, or any form of consideration, pecuniary or otherwise, to any person or official, personnel or representative of the government in relation to any procurement project or activity.

**10. In case advance payment was made or given, failure to perform or deliver any of the obligations and undertakings in the contract shall be sufficient grounds to constitute criminal liability for Swindling (Estafa) or the commission of fraud with unfaithfulness or abuse of confidence through misappropriating or converting any payment received by a person or entity under an obligation involving the duty to deliver certain goods or services, to the prejudice of the public and the government of the Philippines pursuant to Article 315 of Act No. 3815 s. 1930, as amended, or the Revised Penal Code.**

**IN WITNESS WHEREOF**, I have hereunto set my hand this \_\_ day of \_\_, 20\_\_ at \_\_\_\_\_, Philippines.

*[Insert NAME OF BIDDER OR ITS AUTHORIZED REPRESENTATIVE]*

*[Insert signatory's legal capacity]*  
*Affiant*

***[Jurat]***

*[Format shall be based on the latest Rules on Notarial Practice]*

Project ID:  
Project Name:  
Location of the Project:

### **Performance Securing Declaration (Revised)**

[if used as an alternative performance security but it is not required to be submitted with the Bid, as it shall be submitted within ten (10) days after receiving the Notice of Award]

REPUBLIC OF THE PHILIPPINES)  
CITY OF \_\_\_\_\_ ) S.S.

#### **PERFORMANCE SECURING DECLARATION**

Invitation to Bid: [Insert Reference Number indicated in the Bidding Documents]  
To: [Insert name and address of the Procuring Entity]

I/We, the undersigned, declare that:

1. I/We understand that, according to your conditions, to guarantee the faithful performance by the supplier/distributor/manufacturer/contractor/consultant of its obligations under the Contract, I/we shall submit a Performance Securing Declaration within a maximum period of ten (10) calendar days from the receipt of the Notice of Award prior to the signing of the Contract.

2. I/We accept that: I/we will be automatically disqualified from bidding for any procurement contract with any procuring entity for a period of one (1) year for the first offense, or two (2) years **for the second offense**, upon receipt of your Blacklisting Order if I/We have violated my/our obligations under the Contract;

3. I/We understand that this Performance Securing Declaration shall cease to be valid upon:

a. issuance by the Procuring Entity of the Certificate of Final Acceptance, subject to the following conditions:

- i. Procuring Entity has no claims filed against the contract awardee;
- ii. It has no claims for labor and materials filed against the contractor; and
- iii. Other terms of the contract; or

b. replacement by the winning bidder of the submitted PSD with a performance security in any of the prescribed forms under Section 39.2 of the 2016 revised IRR of RA No. 9184 as required by the end-user.

**IN WITNESS WHEREOF**, I/We have hereunto set my/our hand/s this \_\_\_\_ day of [month] [year] at [place of execution].

*[Insert NAME OF BIDDER OR ITS  
AUTHORIZED REPRESENTATIVE]  
[Insert signatory's legal capacity]  
Affiant*

**[Jurat]**

*[Format shall be based on the latest Rules on Notarial Practice]*

Project ID:  
 Project Name:  
 Location of the Project:

### NFCC COMPUTATION FORMAT

a. Summary of the Applicant Supplier's/Distributor's/Manufacturer's assets and liabilities on the basis of the attached income tax return and audited financial statement, stamped "RECEIVED" by the Bureau of Internal Revenue or BIR authorized collecting agent, for the immediately preceding year and a certified copy of Schedule of Fixed Assets particularly the list of construction equipment.

		Year 20__
A	Total Assets	
B	Current Assets	
C	Total Liabilities	
D	Current Liabilities	
E	Net Worth (A-C)	
F	Net Working Capital (B-D)	

b. The Net Financial Contracting Capacity (NFCC) based on the above data is computed as follows:

NFCC = K (current asset – current liabilities) minus value of all outstanding works under ongoing contracts including awarded contracts yet to be started

NFCC = P \_\_\_\_\_

K = 15

Herewith attached are certified true copies of the income tax return and audited financial statement: stamped "RECEIVED" by the BIR or BIR authorized collecting agent for the immediately preceding year.

Submitted by:

\_\_\_\_\_  
 Name of Supplier/Distributor/Manufacturer  
 Signature of Authorized Representative

Date : \_\_\_\_\_

Note: If partnership or Joint Venture, each partner or member firm of Joint Venture shall submit the above requirements

